







1350 PSI = 3/4 BIN  
1600 PSI = FULL BIN  
1800 PSI = RELIEF  
900 PSI = EXT  
700 PSI = RET

26-10-2011  
rel. F. 2  
S. ...  
P. ...  
12-10-11

**WARNING**  
Handle with care  
Before working  
disconnect power  
Handle parts  
before use.

**SCORPION** 3-PH ELECTRIC MOTOR CE

IEC60034 No 2006090020 EFF 90%

Type Y2-160M-4 Th.Cl.F IP55 COS $\phi$  0.84

50Hz:  $\Delta/Y$  415/720V 11 KW DE BRG 6309ZZC3

60Hz:  $\Delta/Y$  460/790V 11 KW NDE BRG 6209ZZC3

50Hz:  $\Delta/Y$  400-440/684-756V 20.2/11.6A RPM 1460

60Hz:  $\Delta/Y$  440-480/750-829V 18.1/10.5A RPM 1760



**VICKERS**®

**FILTER ASSY PN**

434599-2

**ELEM PN** 334479-2

**WORKING PRESS** 200 PSI

**FILTER SIDE**

ABB IP65

**BROOKS firetracker**  
Alarm System

Power On  
 Common Fault

Buzzer Mute  
 Reset

Alarm Test   
Fault Test   
Disable

Model FT1-SB



236-199

BLADE  
EXTEND



MANUAL



AUTO

KEY  
START



REMOVE KEY  
AFTER USE

BLADE  
RETRACT



GATES  
OPEN



BIN  
FULL



EMERGENCY STOP  
DEPRESSED



OPERATE  
EMERGENCY  
STOP BUTTON  
TO RESET  
BIN FULL LIGHT

**WARNING**

AUTHORISED USE ONLY  
READ SAFE OPERATING  
PROCEDURE BEFORE  
USE.

3/4 BIN FULL LIGHT

**SAFE OPERATING PROCEDURE  
WASTECH COMPACTOR**

**EMERGENCY**

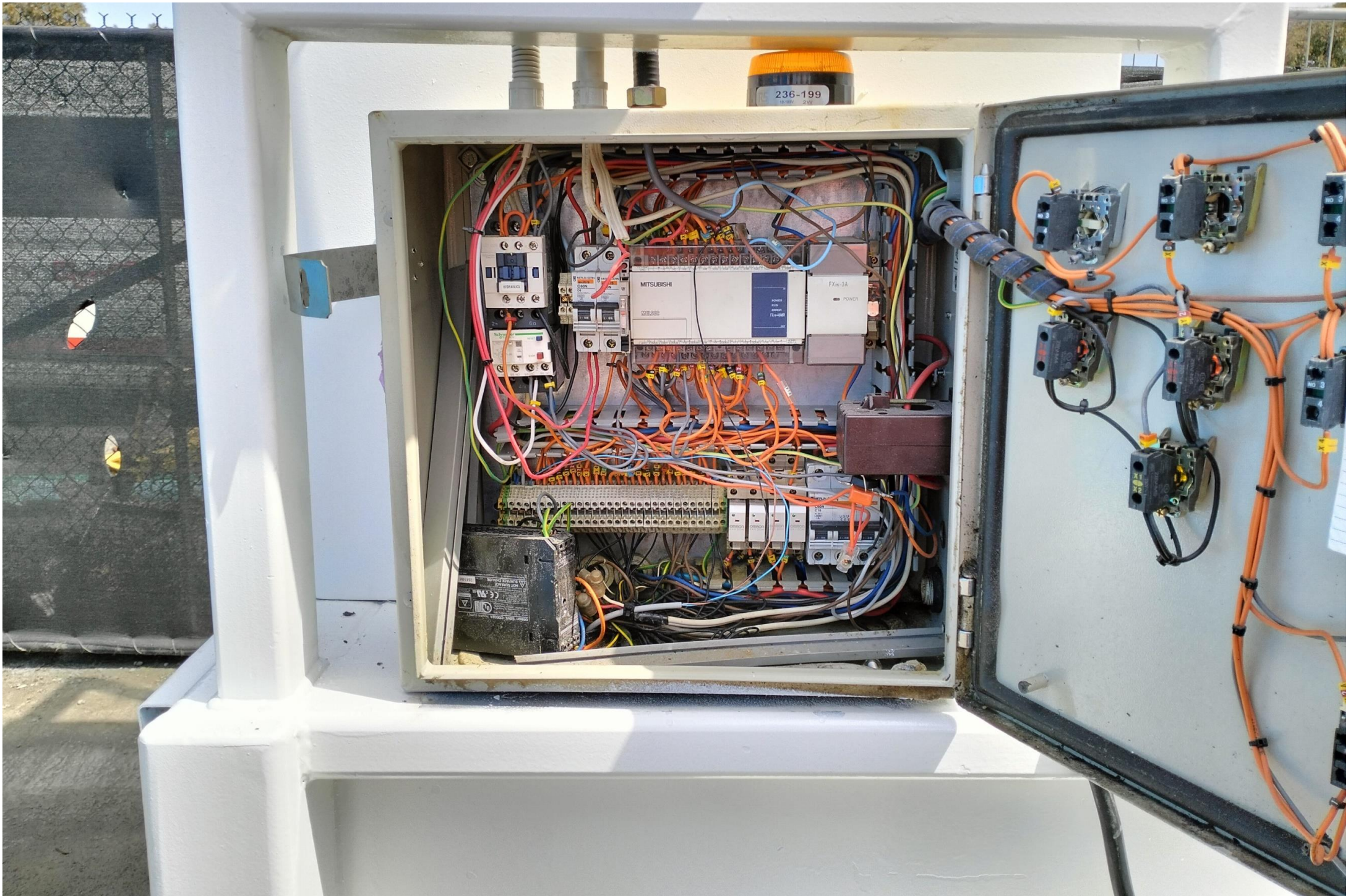


TWIST TO RELEASE

1. Load waste into compactor hopper.
2. Ensure that "EMERGENCY STOP" button is released and hopper gate is closed.
3. Check that main power is plugged in and main isolator switch is "ON".
4. Select "AUTO" or "MANUAL" function. ("BLADE EXTEND" and "BLADE RETRACT" buttons will need to be used in the manual mode.)
5. Insert key into "KEY START" switch and twist to start. Compactor will start and cycle for a set time before stopping automatically.
6. Remove key before leaving compactor.
7. In event of emergency, press "EMERGENCY STOP" button and contact your Supervisor.
8. If "BIN FULL" light illuminates, press then reset "EMERGENCY STOP" button and allow compactor to cycle again. Should "BIN FULL" light illuminate again, arrange a clearance with your waste/recycling contractor.

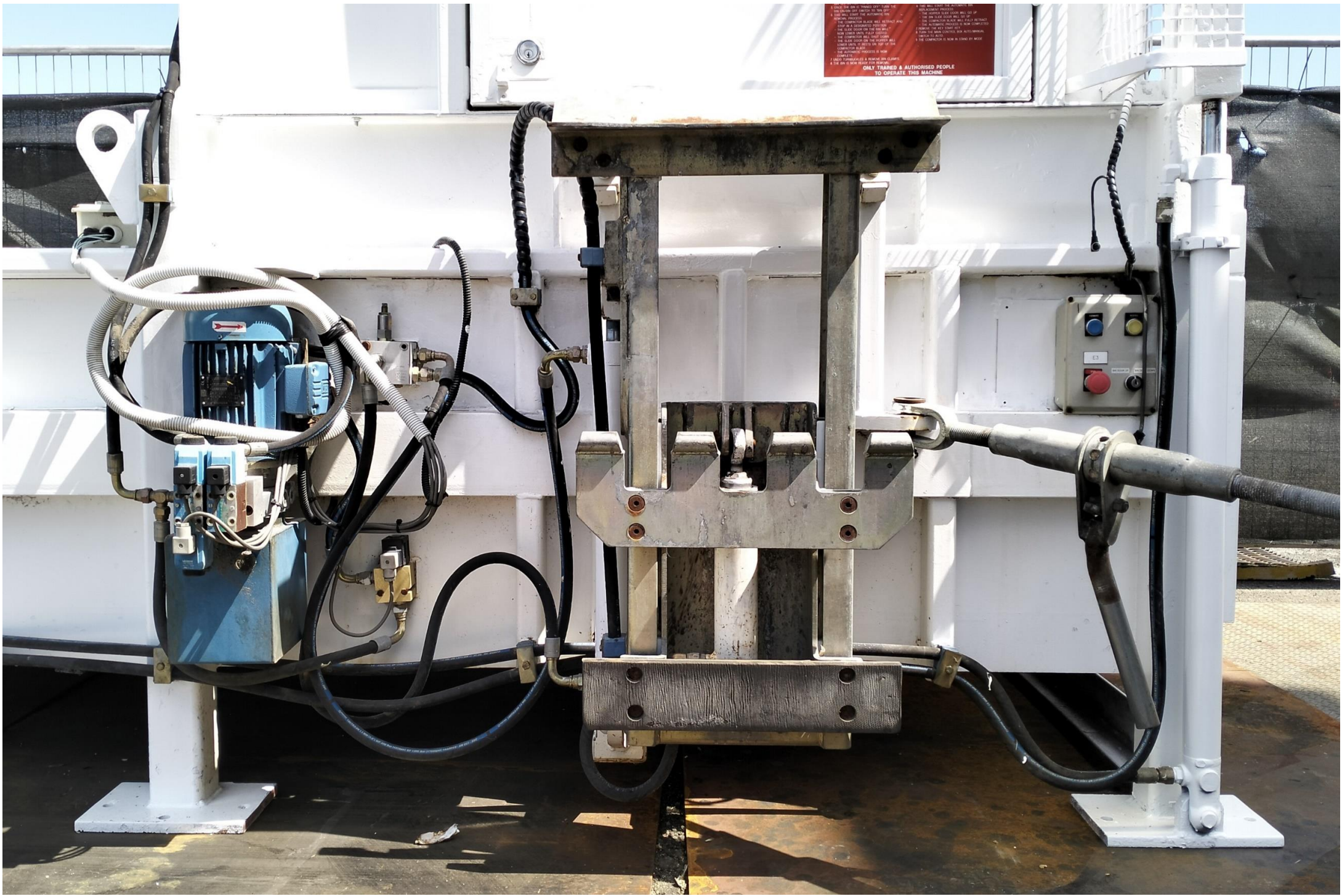
BUILT BY  
**WASTECH**  
ENGINEERING (03) 9794 7155

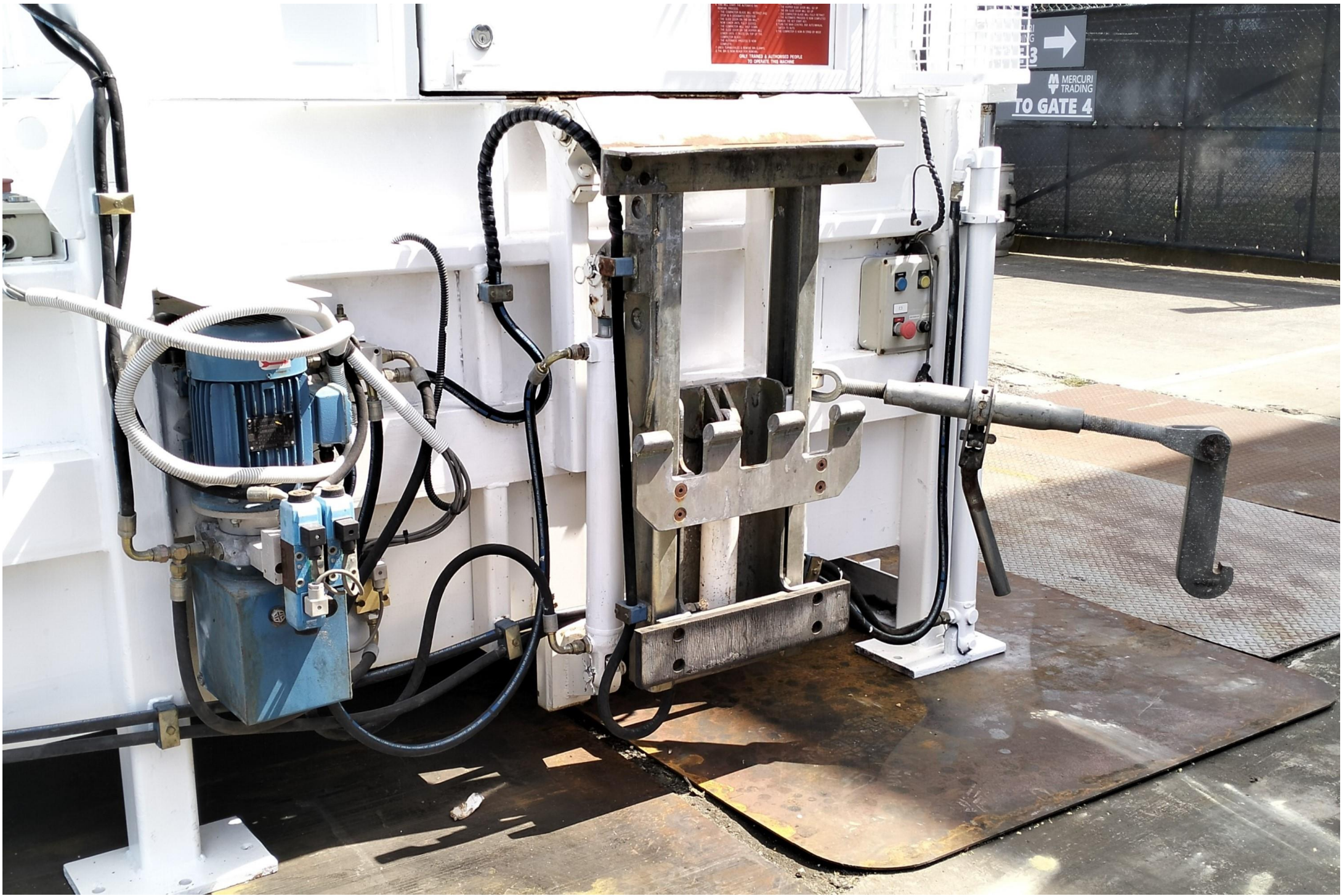
E1



1. ALWAYS WEAR YOUR SAFETY BELT AND HELMET. NEVER DRINK OR USE ALCOHOL WHILE OPERATING THIS MACHINE.  
2. NEVER REPAIR OR MAINTAIN THIS MACHINE WHILE IT IS RUNNING.  
3. NEVER REPAIR OR MAINTAIN THIS MACHINE WHILE IT IS STOPPED.  
4. NEVER REPAIR OR MAINTAIN THIS MACHINE WHILE IT IS STOPPED.  
5. NEVER REPAIR OR MAINTAIN THIS MACHINE WHILE IT IS STOPPED.  
6. NEVER REPAIR OR MAINTAIN THIS MACHINE WHILE IT IS STOPPED.  
7. NEVER REPAIR OR MAINTAIN THIS MACHINE WHILE IT IS STOPPED.  
8. NEVER REPAIR OR MAINTAIN THIS MACHINE WHILE IT IS STOPPED.  
9. NEVER REPAIR OR MAINTAIN THIS MACHINE WHILE IT IS STOPPED.  
10. NEVER REPAIR OR MAINTAIN THIS MACHINE WHILE IT IS STOPPED.

ONLY TRAINED & AUTHORISED PEOPLE  
TO OPERATE THIS MACHINE





WARNING: NEVER OPERATE THE PRESSURE CONTROL VALVE OR THE PRESSURE CONTROL VALVE HANDLE WHILE THE PRESSURE CONTROL VALVE IS OPEN. ALWAYS USE THE PRESSURE CONTROL VALVE HANDLE TO OPERATE THE MACHINE. ONLY TRAINED & AUTHORIZED PEOPLE TO OPERATE THE MACHINE.

MERCURI TRADING  
TO GATE 4



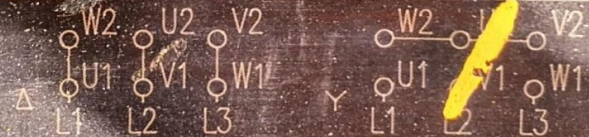
VDE 0530  
IEC 34-1

MADE IN BRAZIL

3 ~ 90L 02/01 FP70695

IP55 Ins. cl. F Δ 180 k S1 SF 1.15

V	Hz	kW	min <sup>-1</sup>	A	cos φ
220 Δ	50	2.2	2830	7.96	0.87
380 Y			2830	4.61	0.87
230 Δ	50	2.2	2840	7.88	0.84
400 Y			2840	4.53	0.84
415 Y	50	2.2	2870	4.43	0.82
440 Y	60	2.6	3470	4.76	0.86
480 Y			3490	4.54	0.82



 → 6205-ZZ LITHIUM BASE  
 → 6204-ZZ

kg

MODEL LTE15

14/09



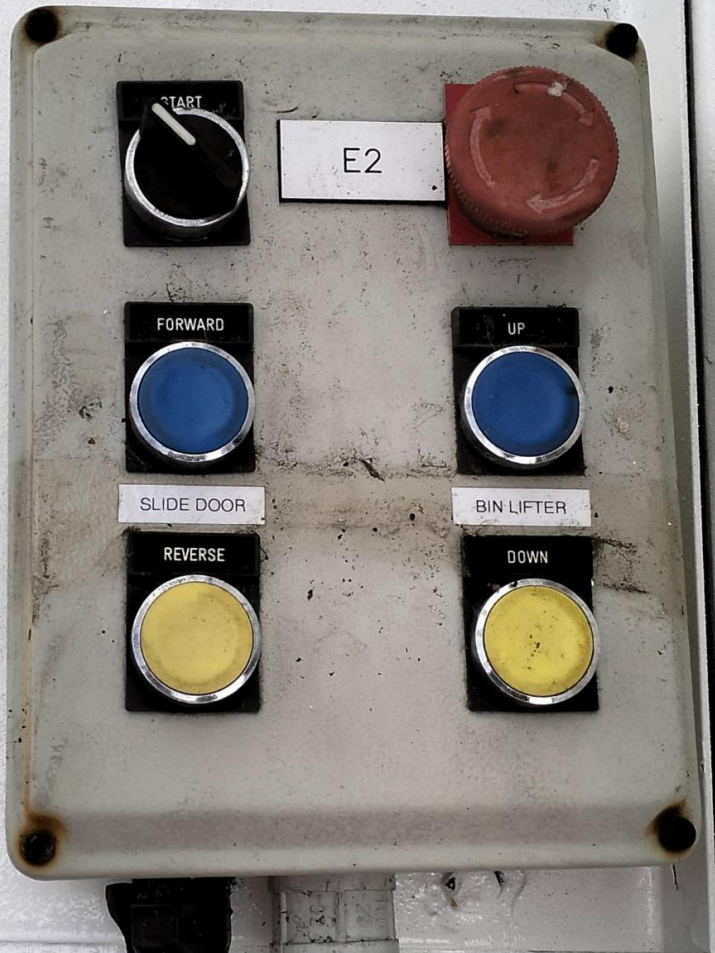












E2

START

Emergency Stop Button

FORWARD

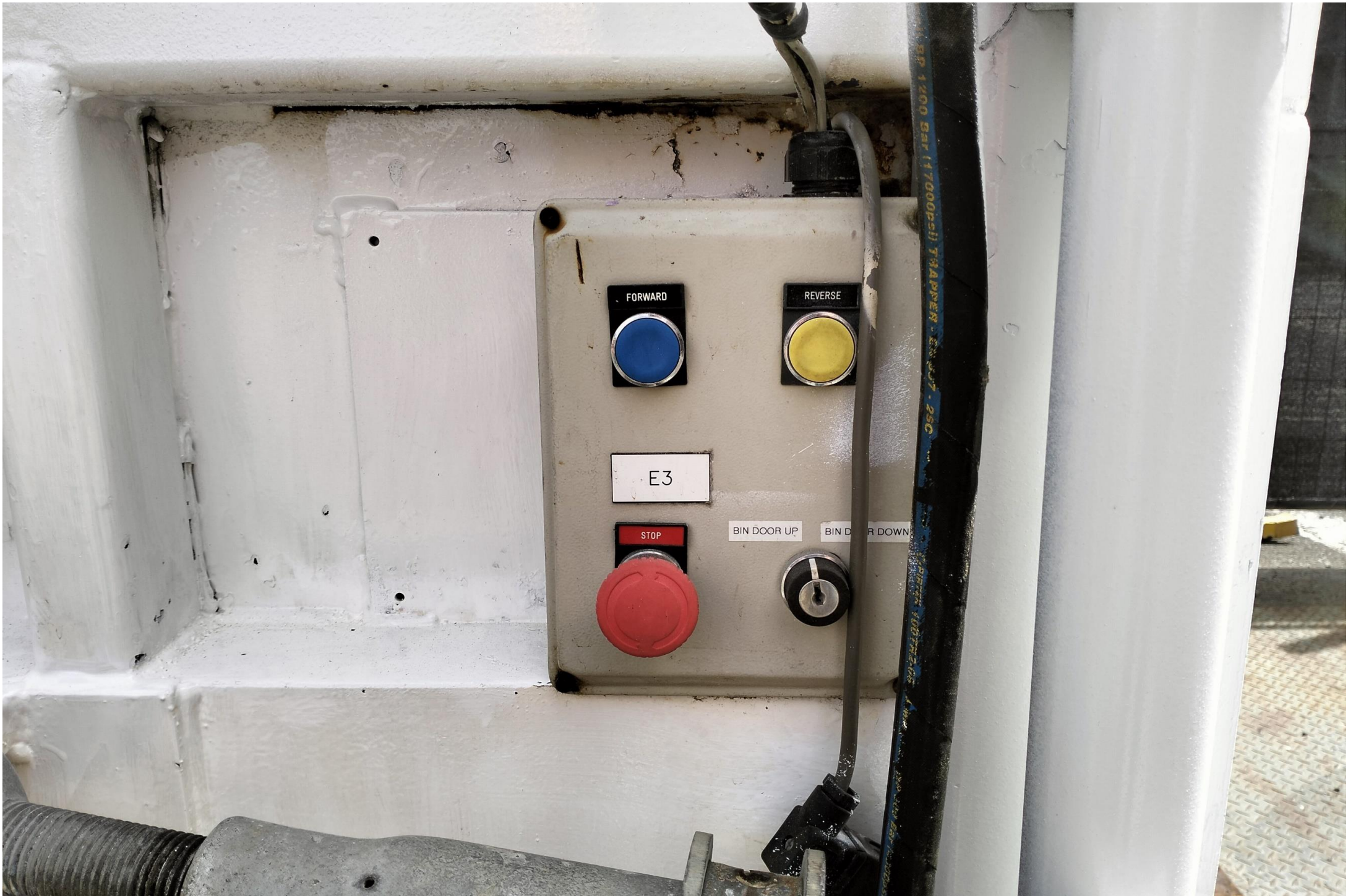
UP

SLIDE DOOR

BIN LIFTER

REVERSE

DOWN



FORWARD

REVERSE

E3

STOP

BIN DOOR UP

BIN DOOR DOWN

HP 1200 Bar (17000psi) TRAPPER EN 307-25C

PROUDLY MANUFACTURED BY:

# WASTECH

ENGINEERING

DATE OF MANU.

12 / 10 / 00

MODEL

S2000

SERIAL No.

WT 1441

HEAD OFFICE: 21 CAPITAL DRIVE DANDENONG VICTORIA 3175

Freecall: 1800 465 465

