

Roll Feed RFL 30-45-60



Easy handling of edge trimmings

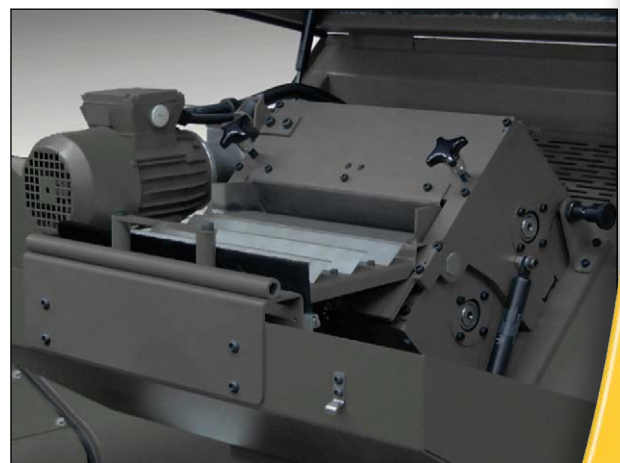
The Rapid Roll Feed Light, RFL-30 built on a 2036 granulator, is the smart solution for taking care of edge trimmings from foil extrusion lines. The system runs completely in-line, the recycled material can be put directly back to the line to produce new valuable foil.

Much effort have been put to make the roll feed unit and the granulator as easy to handle as you possibly can ask for. The hood can be opened and the edge trimmings inserted while the granulator is still running.

The twin standard grooved rollers are designed to automatically keep the edge trims stretched. This in combination with the frequency controlled roll feed enables the granulator to run automatically with a minimum of downtime.

Smart design

- Easy access for insertion of edge trimmings at start up.
- Frequency controlled roll feed motor.
- No loop control required for infeed speed regulation.
- Easy to open, clean and service, no tools required.
- Fully sound proofed.

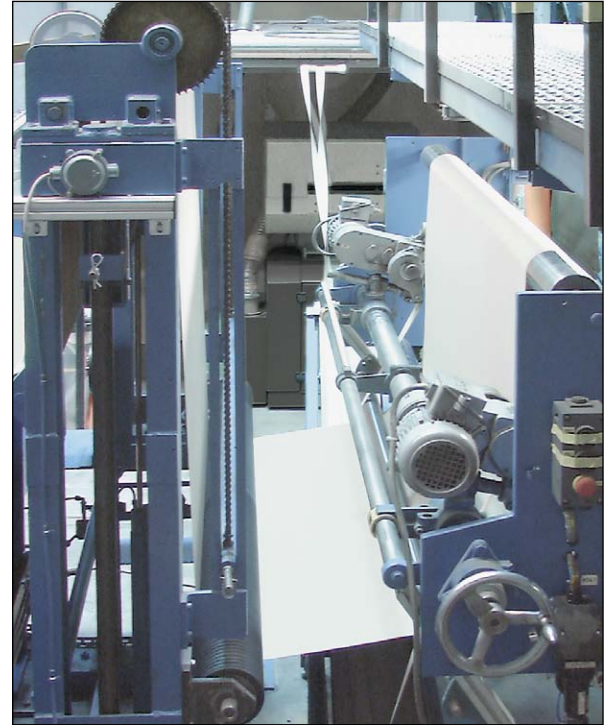


Exposed roll feed unit RFL-30, easy access for insertion of edge trimmings.

TECHNICAL INFORMATION – ROLL FEED

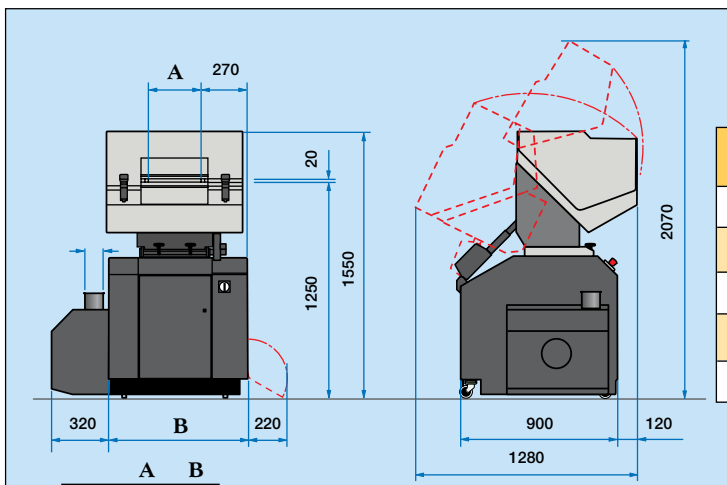


Rapid 2036 "KURF" granulator with RFL-30 infeed for in line recycling of extrusion edge trimmings.



Roll Feed unit	RFL30	RFL45	RFL60
Inlet opening	300 mm	450 mm	600 mm
Motor (frequency control)	0,37 kW		
Feed rate	Up to 140 m/min		

	Standard	Option
Roller type	Grooved	Knurled alt. smooth
Pressure roller	Straight	Split 2- or 3-sections
Transmission	Single	Double roll drive
Line synchr.	Slipping	Loop control



	A	B
2036	300	790
2048	450	910

Rapid "KURF" model	2036	2048
Cutterhouse opening, mm	360x230	480x230
Rotor diameter, mm	200	200
Rotating knives	3	3
Fixed knives	3	3
Throughput, kg/h	Up to 100	Up to 150



Rapid Granulator AB
 Box 9, SE-330 10 Bredaryd, Sweden.
 Tel.: +46 370 86500, Fax: +46 370 802 51
www.rapidgranulator.com