





MINPEAR® S.p.A. MILANO ITALY

NO: 151029014

TYPE NMRV 40

i 15

<http://www.minpear.cn>

MINPEAR[®]

S.p.A. <http://www.minpear.com>



TYPE **BM7124**

N° **20151101004**

SERV. S1

POLI 4

IP 55

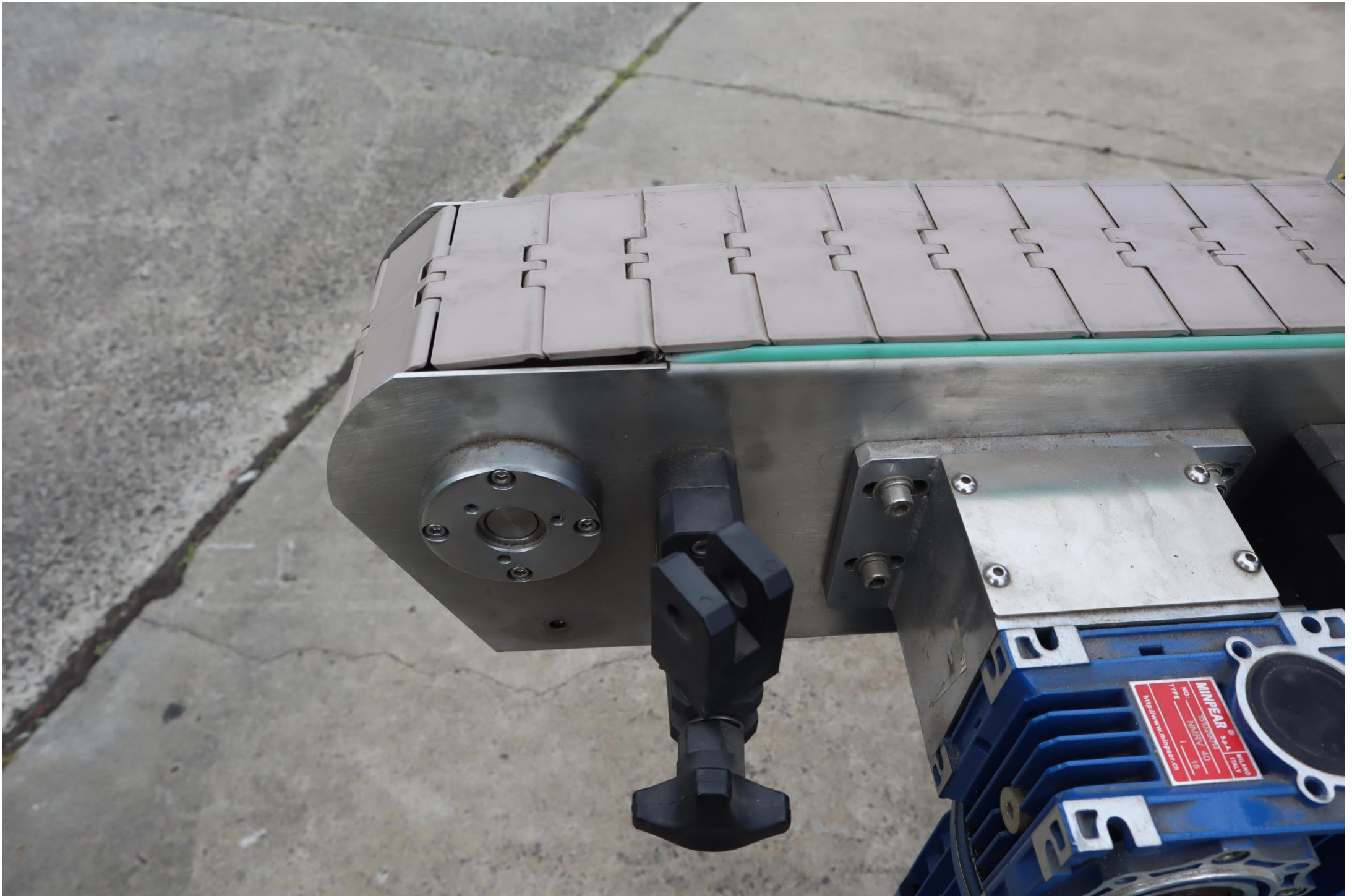
Ins.Cl. F

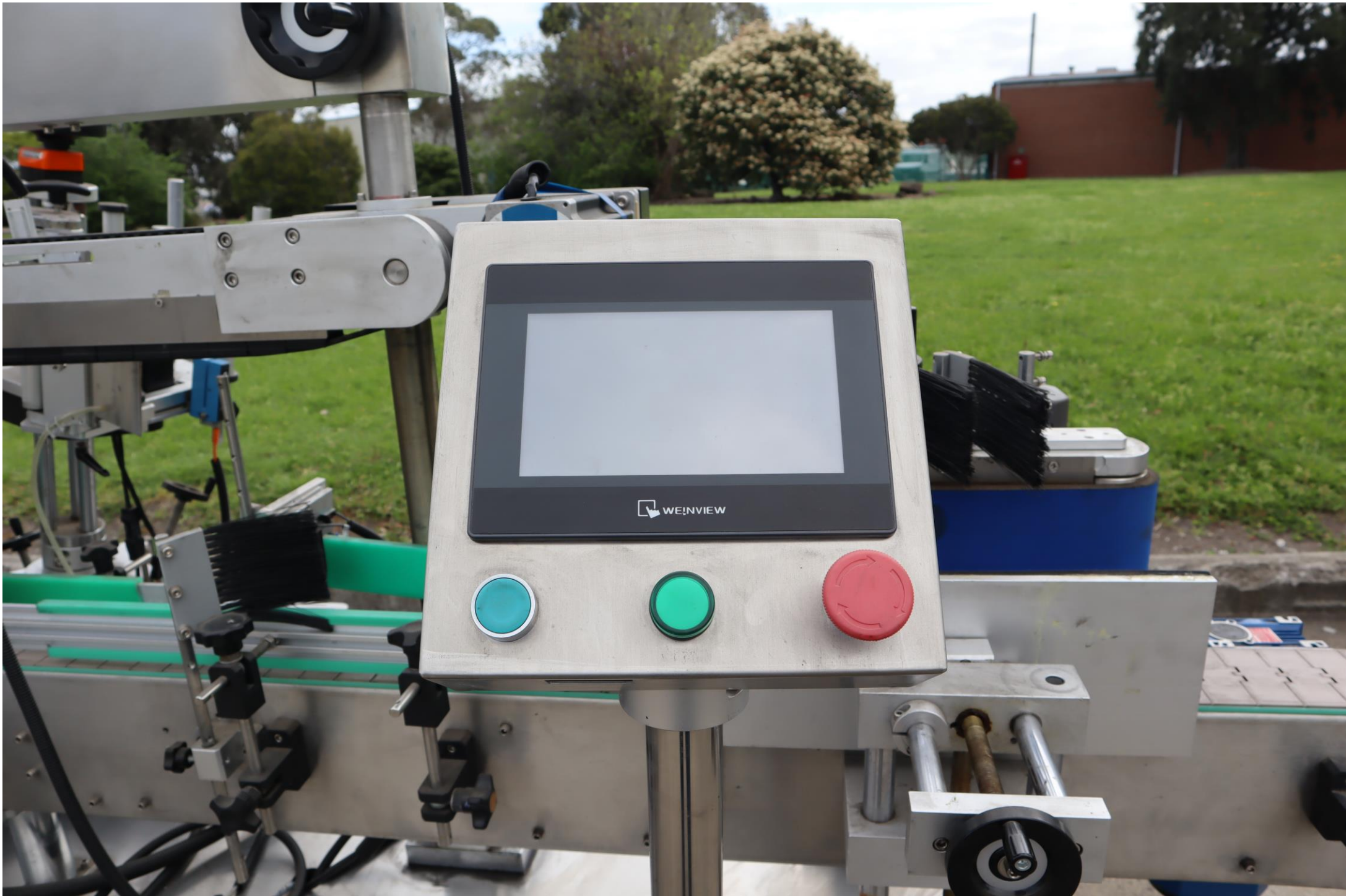
Hz	KW	Cosφ	RPM	VΔ	AΔ	VY	AY
50	0.37	0.72	1340	220	1.12	380	1.35
60	0.37	0.72	1620	380	1.12	410	1.35



A405760







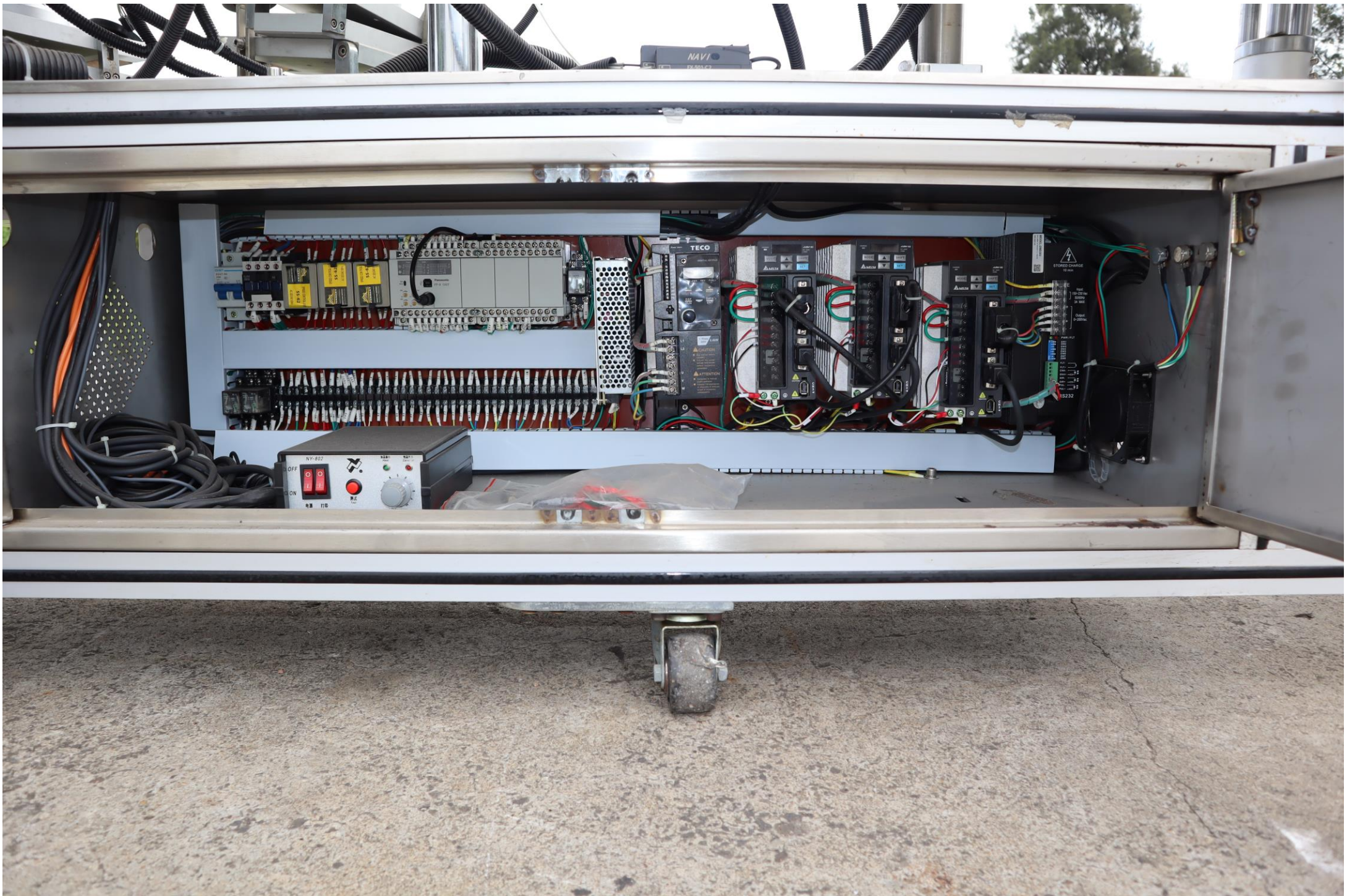


Leadshine

STEPPING MOTOR

www.leisai.com



















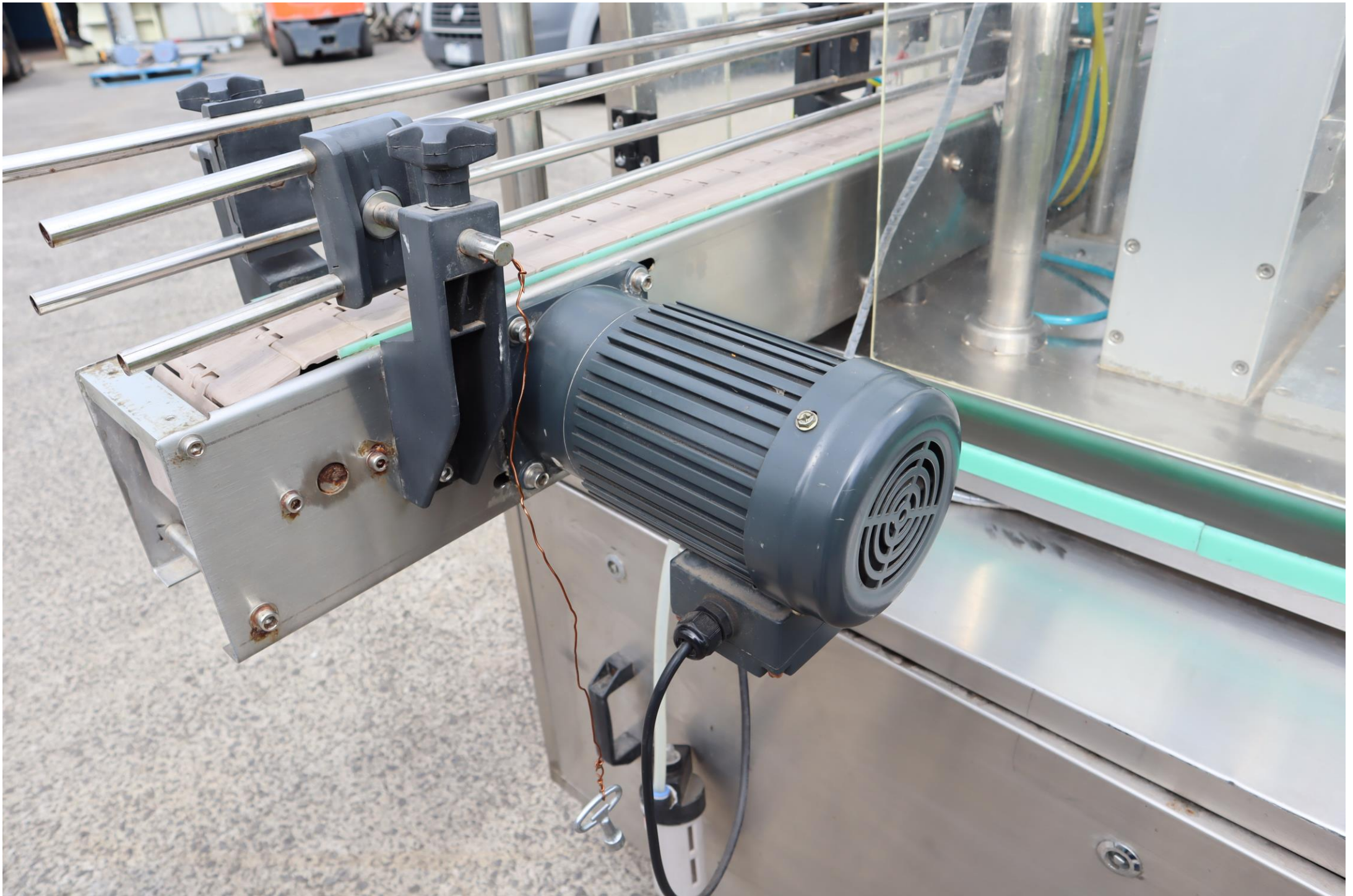


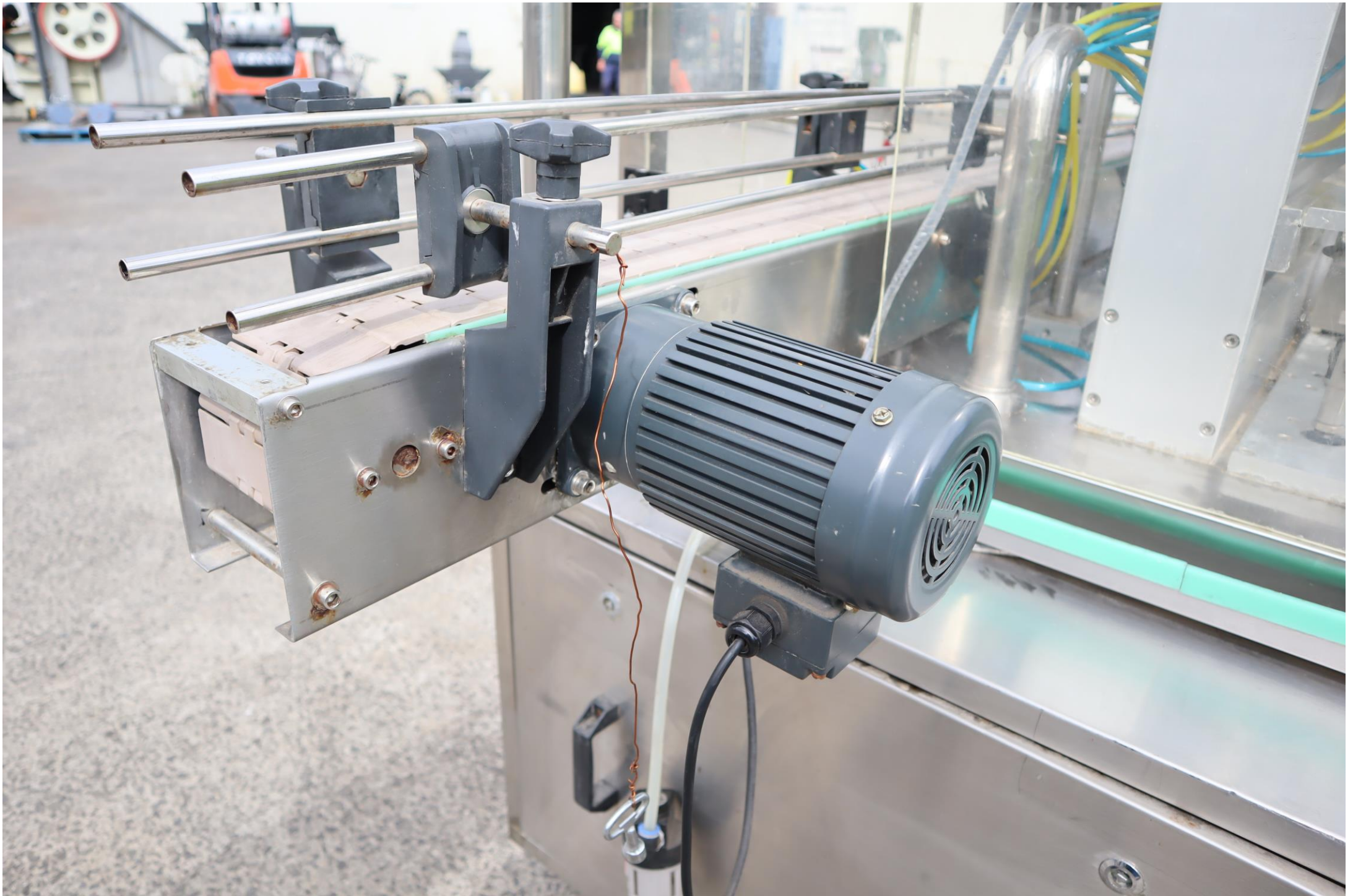


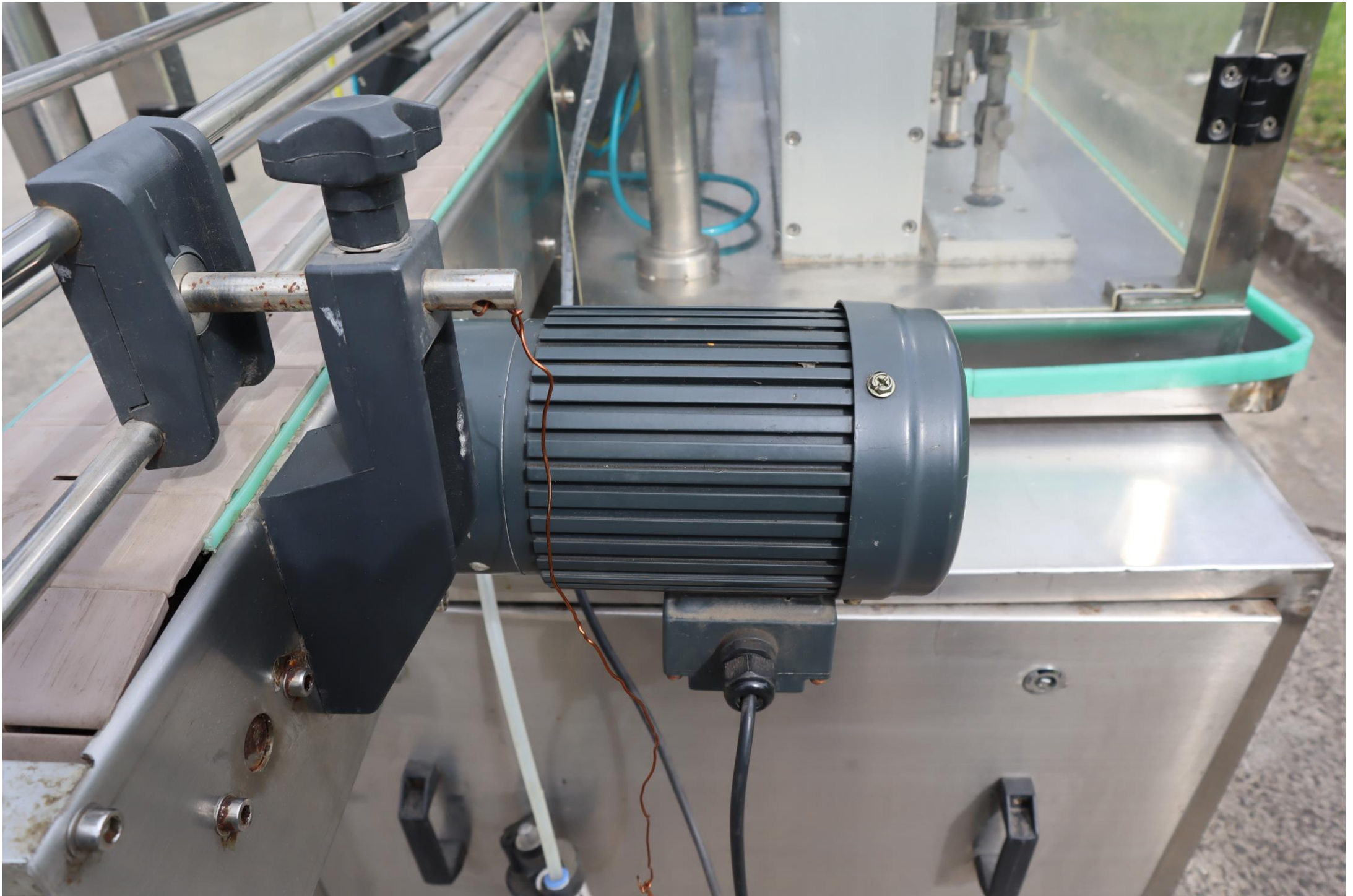










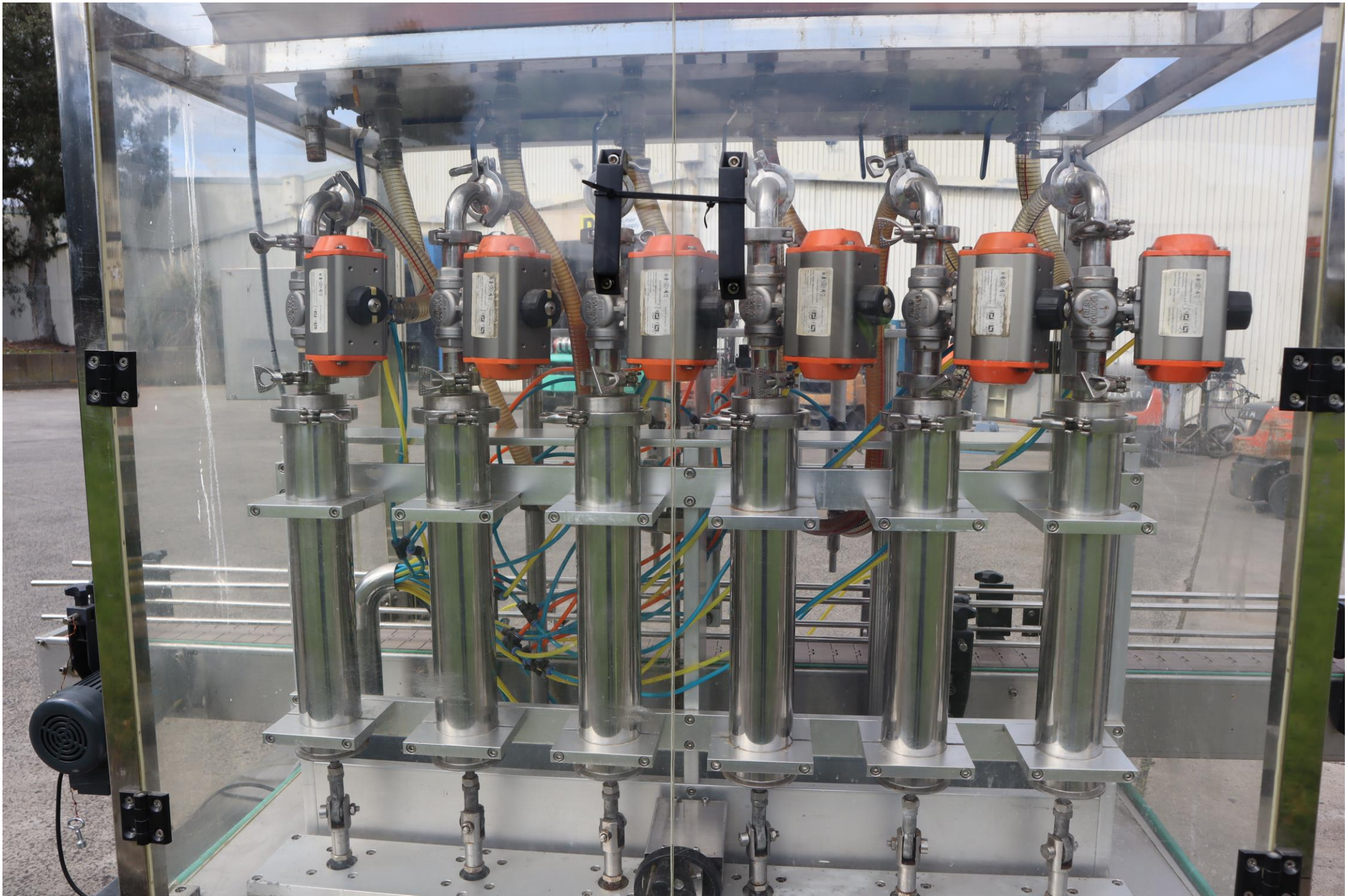


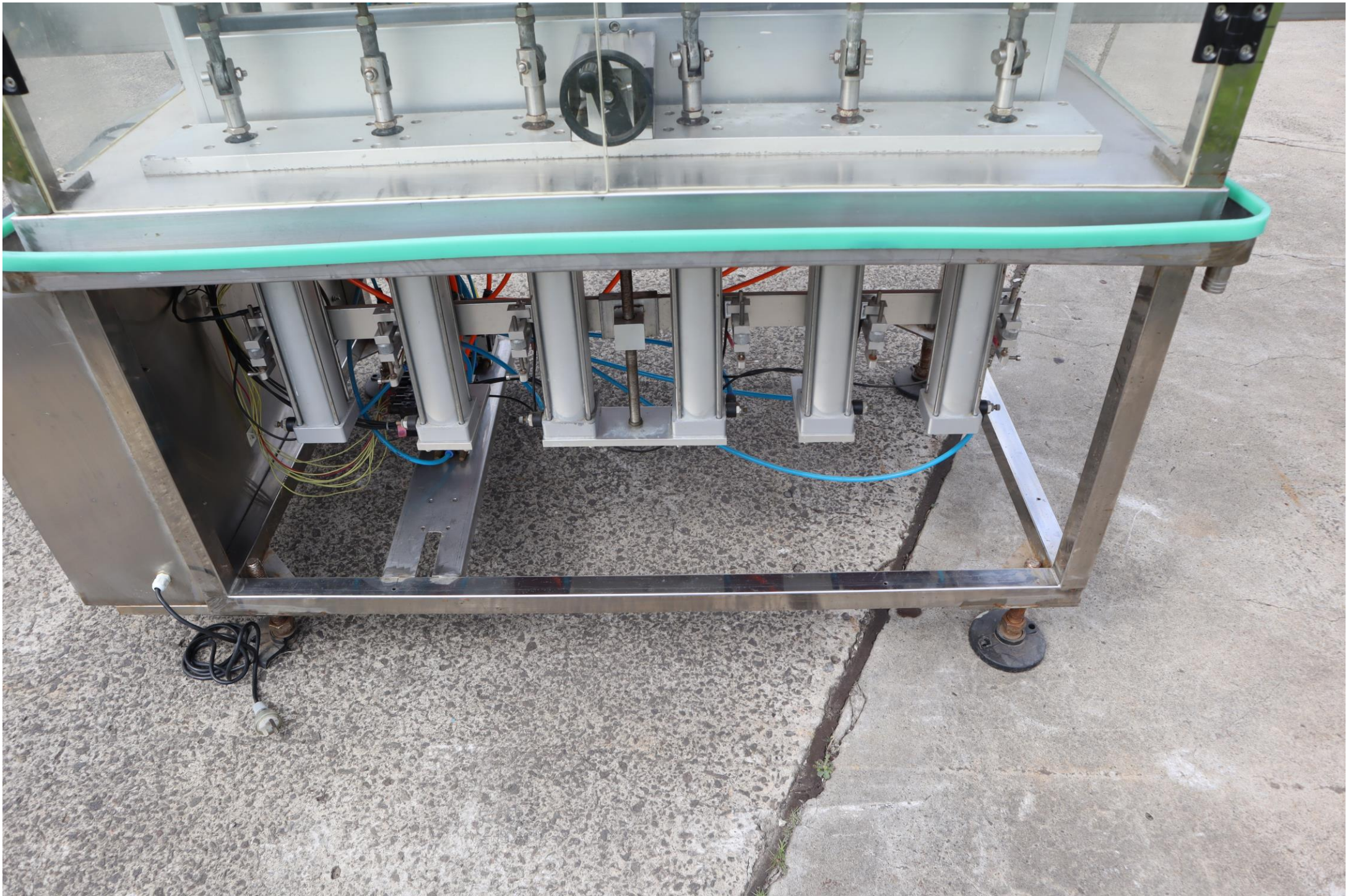


THREE PHASE ASYNCHRONOUS MOTOR

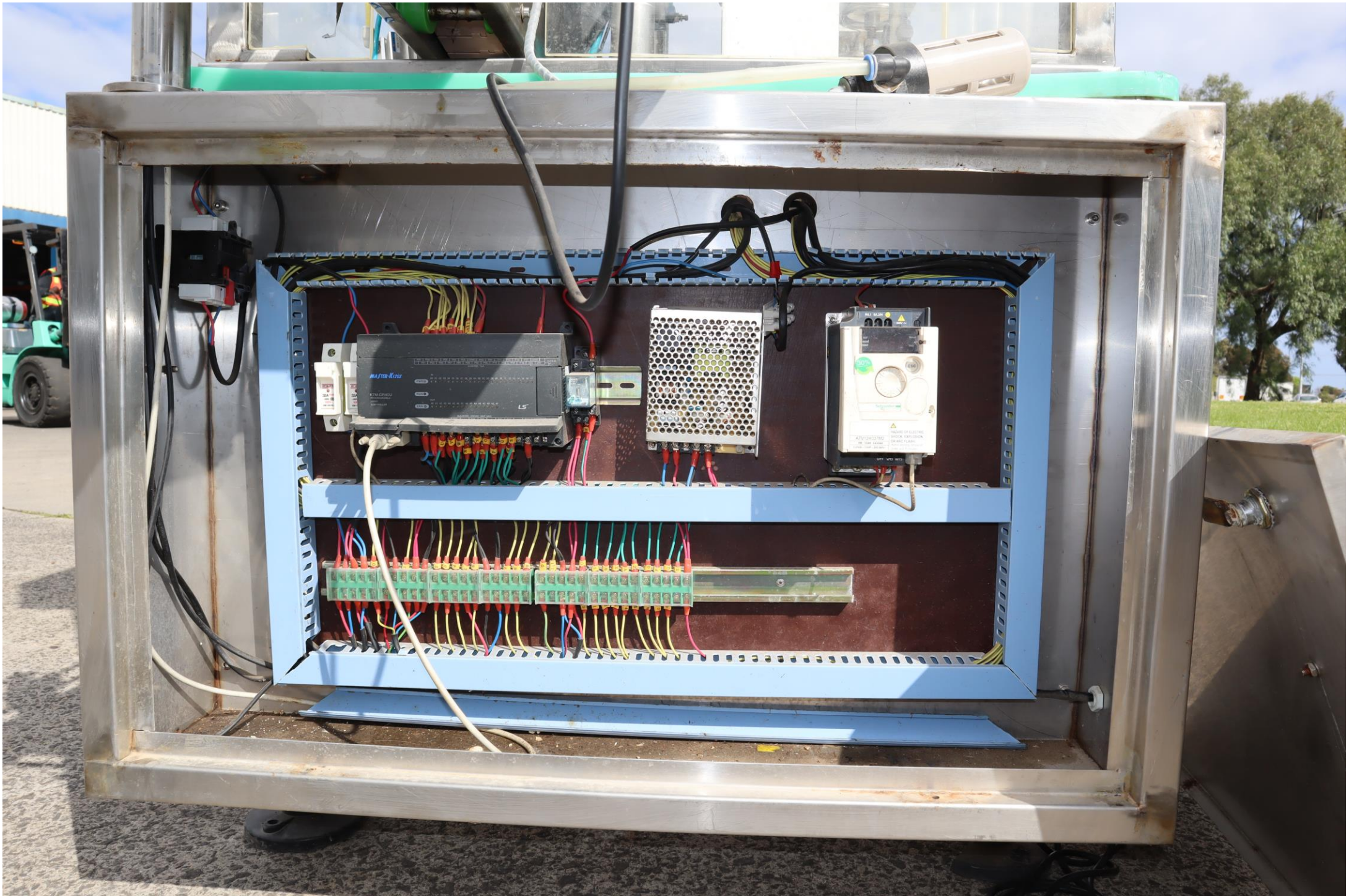
MODEL	CH <input type="checkbox"/> CV <input type="checkbox"/>	RATING	CONT.	PHASE	3
		INS	B	POLES	4
POWER	1/4 HP 200 W	(Z) (X) (Y) ○	(U) (V) (W) (ZXY)		
VOLTS	220V / 380V	(U) (V) (W) ○	(U) (V) (W) ○		
CURRENT	1.15A / 0.67A	↑ ↑ ↑	↑ ↑ ↑		
FREQUENCY	50 Hz				
R.P.M	1400 r/min	△ LOW VOLT	∧ HIGH VOLT		

CE V.T.V MOTOR //www.vtv.com.cn

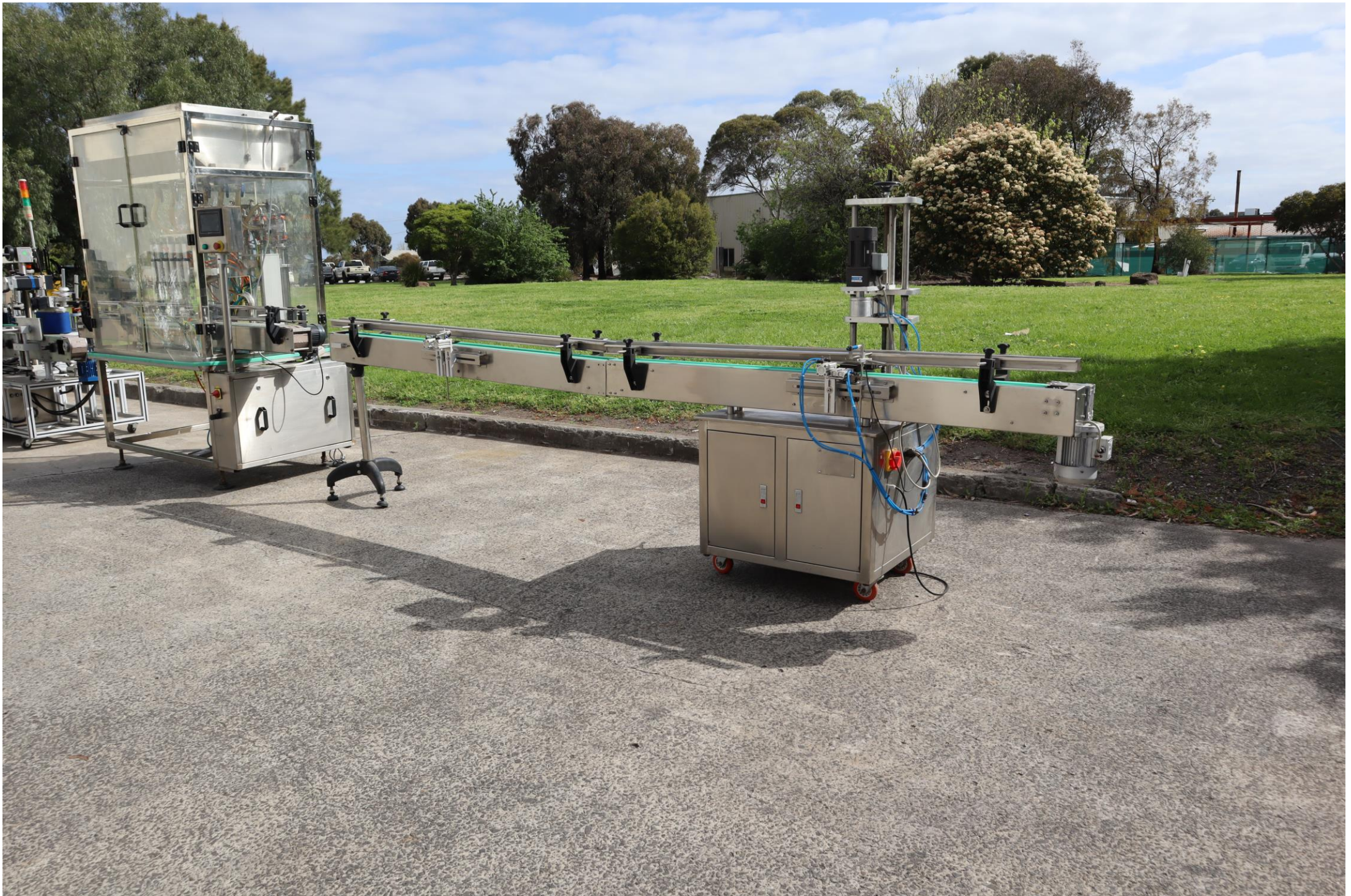


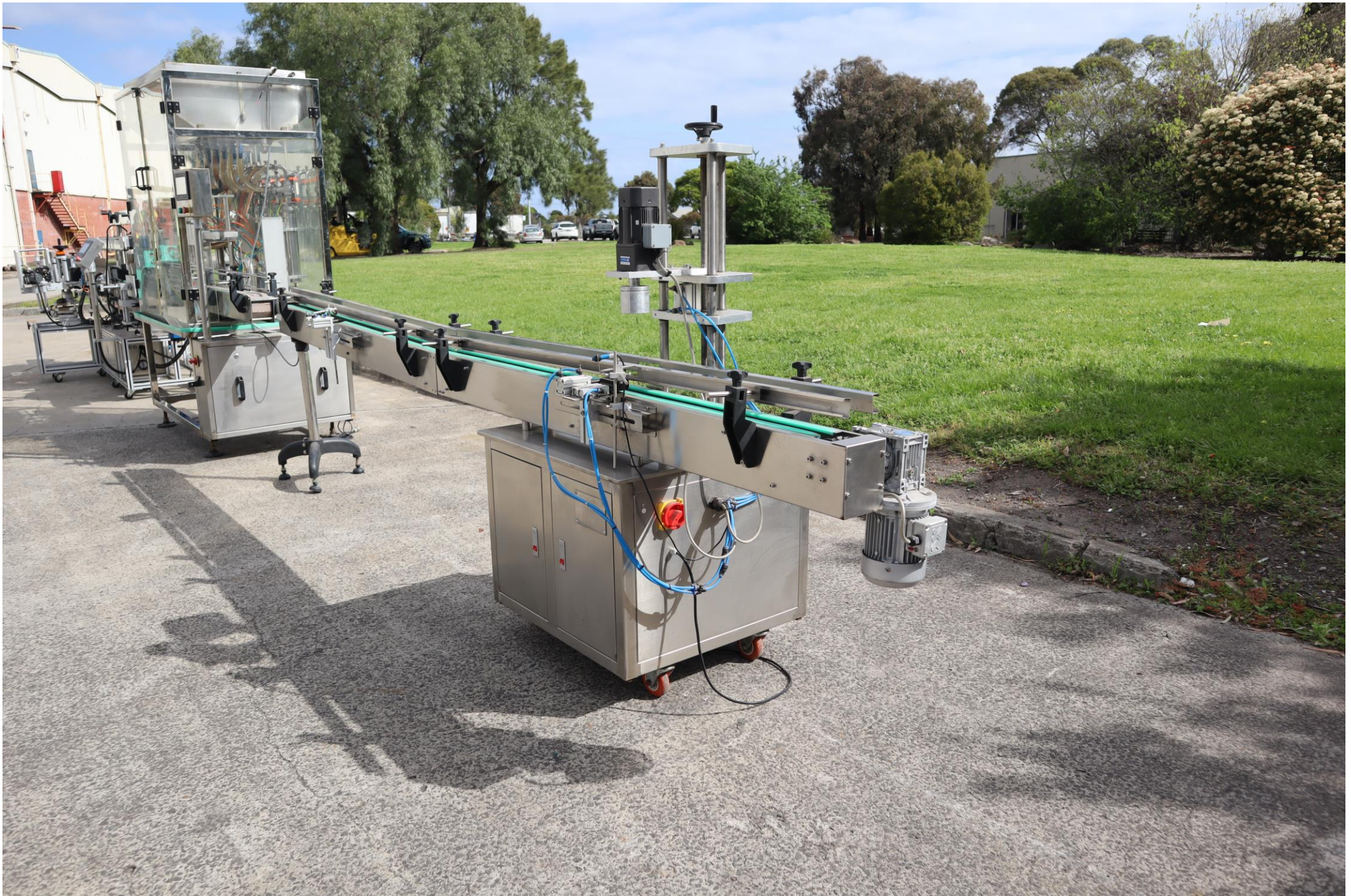














®
型号 NMRV5030YD.37-F
速比 30
法兰
编号 S15061907-1
浙江午马减速机有限公司
0577-86527111

三相异步电动机 

0.37 kW	JB/T 1009-2007
A 380 V 接法 Y	1350 r/min
效率 89.5 %	cosφ 0.72
IP 55	kg No. 4.9 12 A2015.06

江新菱电机有限公司

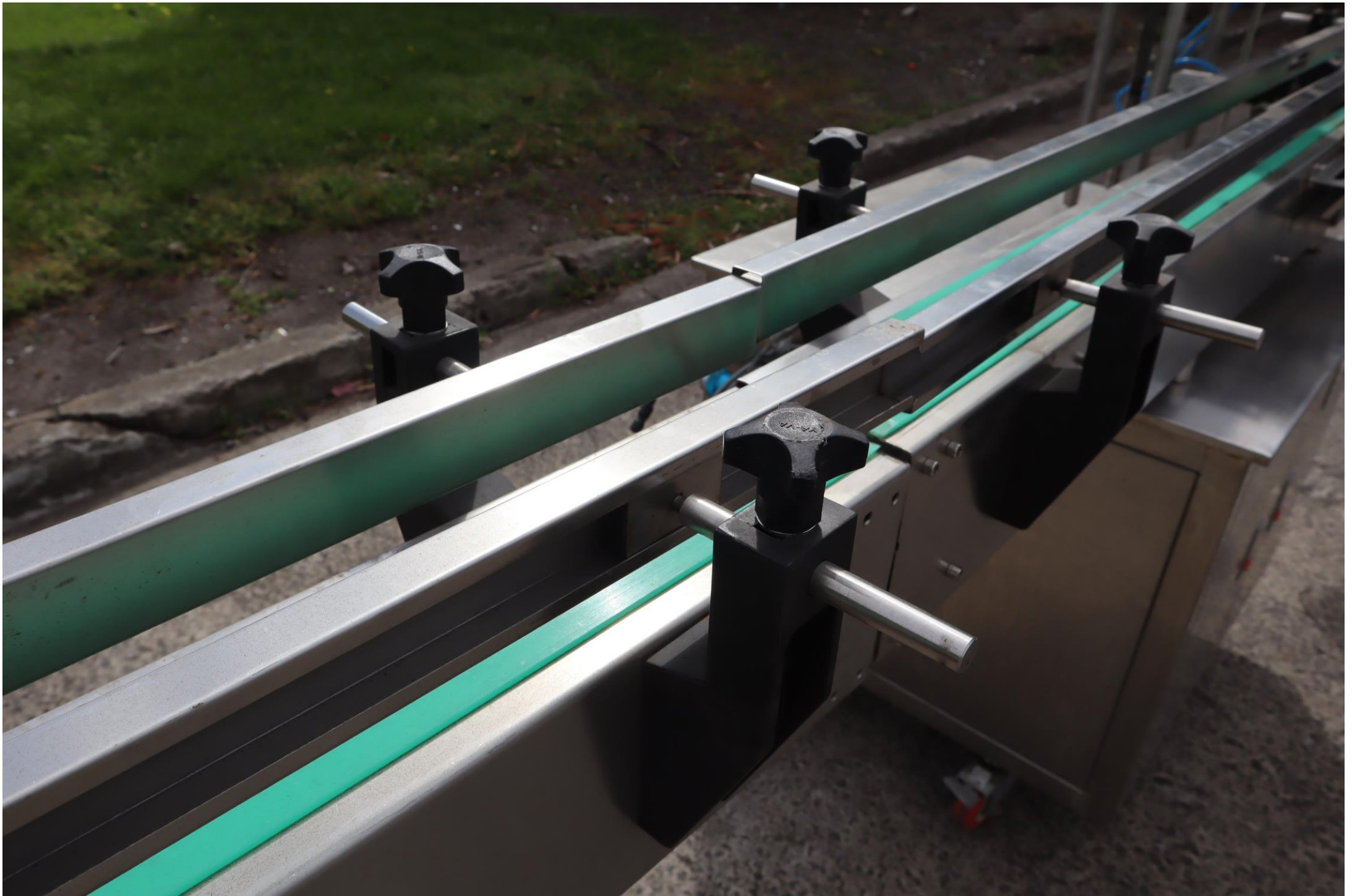

三相异步电动机

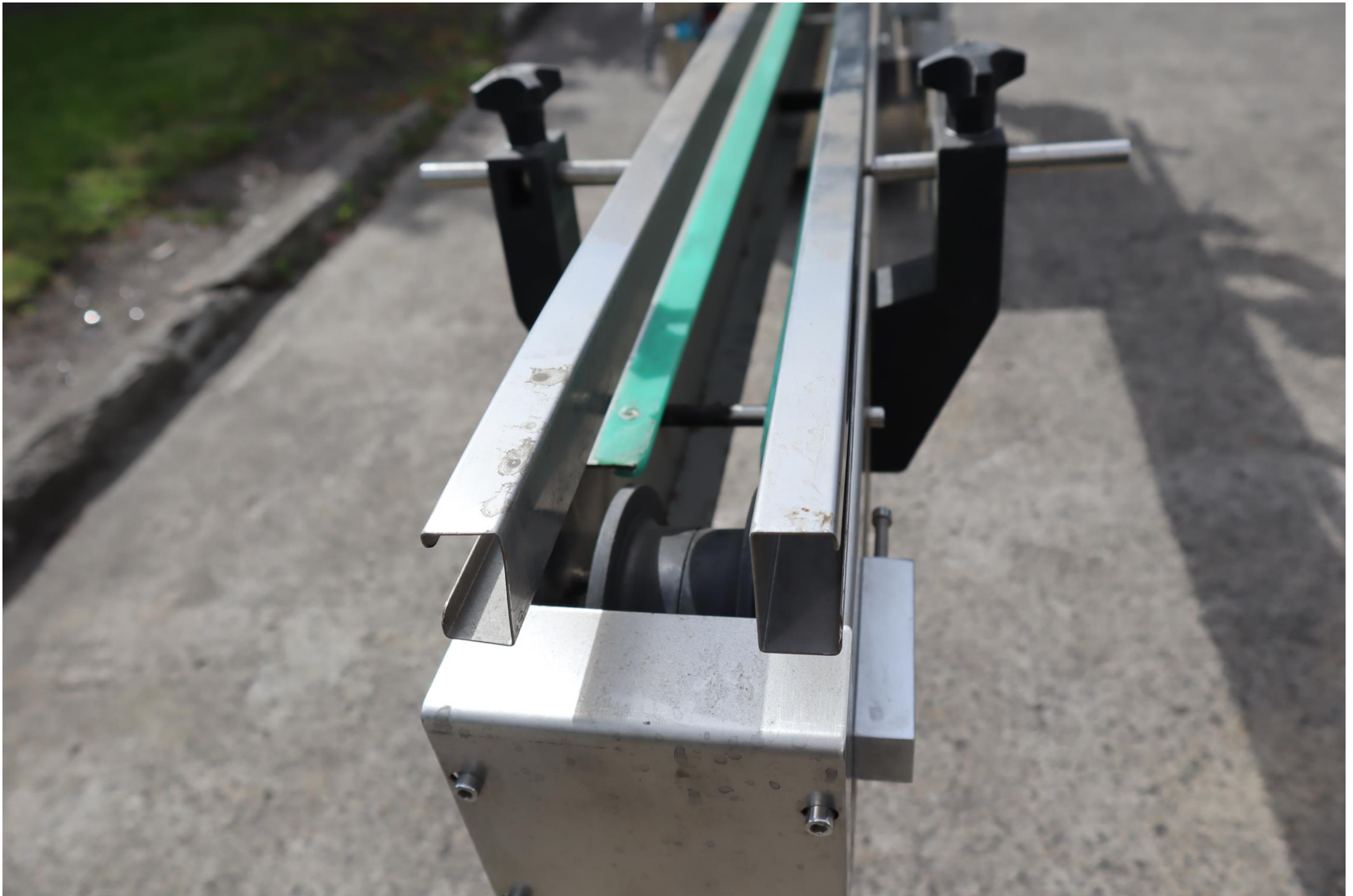

新菱电机	YS	0.37 kW	JB/T 1009-2007
Hz	A	380 V	接法 Y 1350 r/min
绝缘等级	效率 89.5 %	cosφ 0.72	70 dB(A)
B5	IP 55	6 kg	No. 4912 A2015.06

浙江新菱电机有限公司

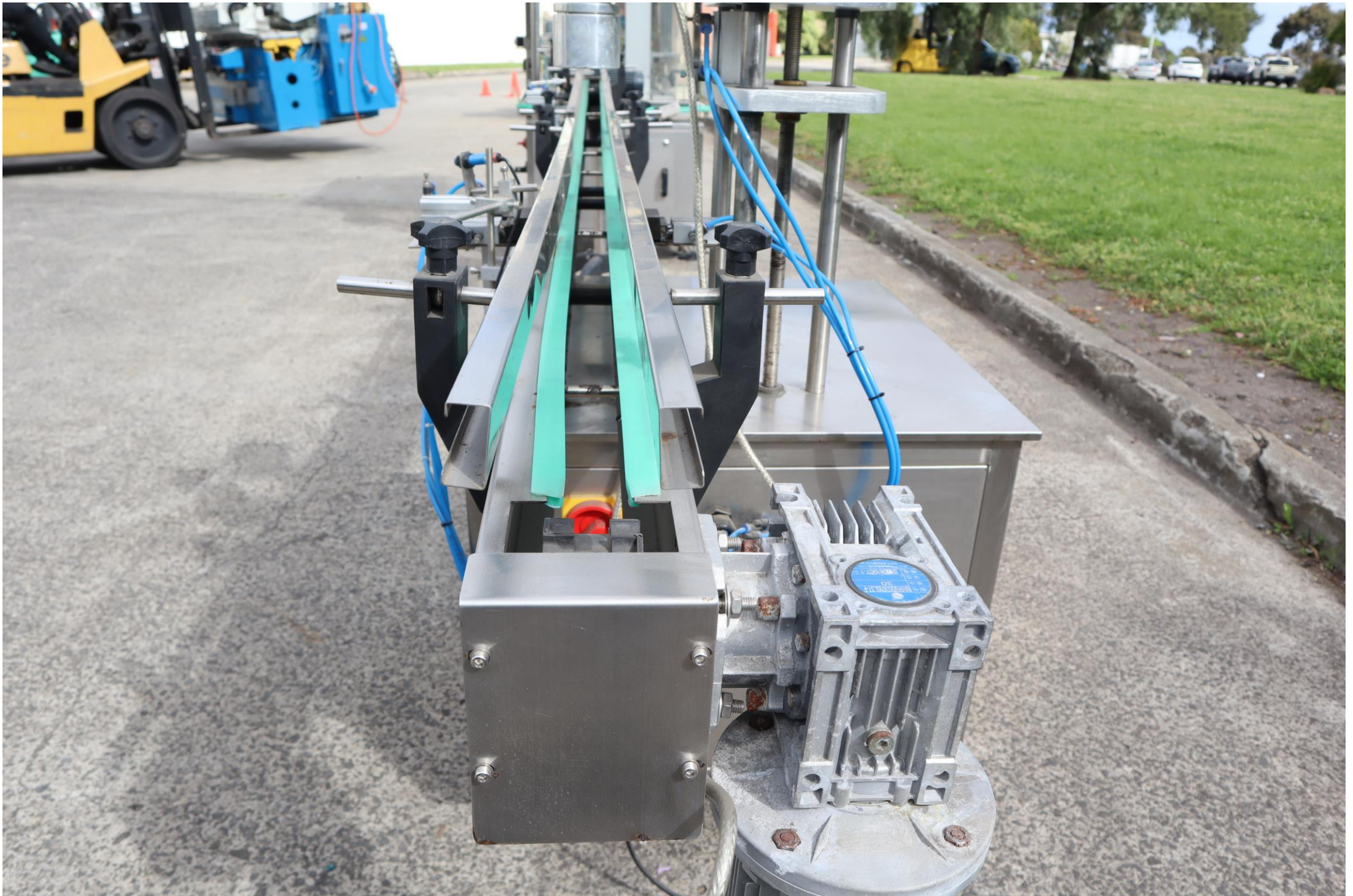


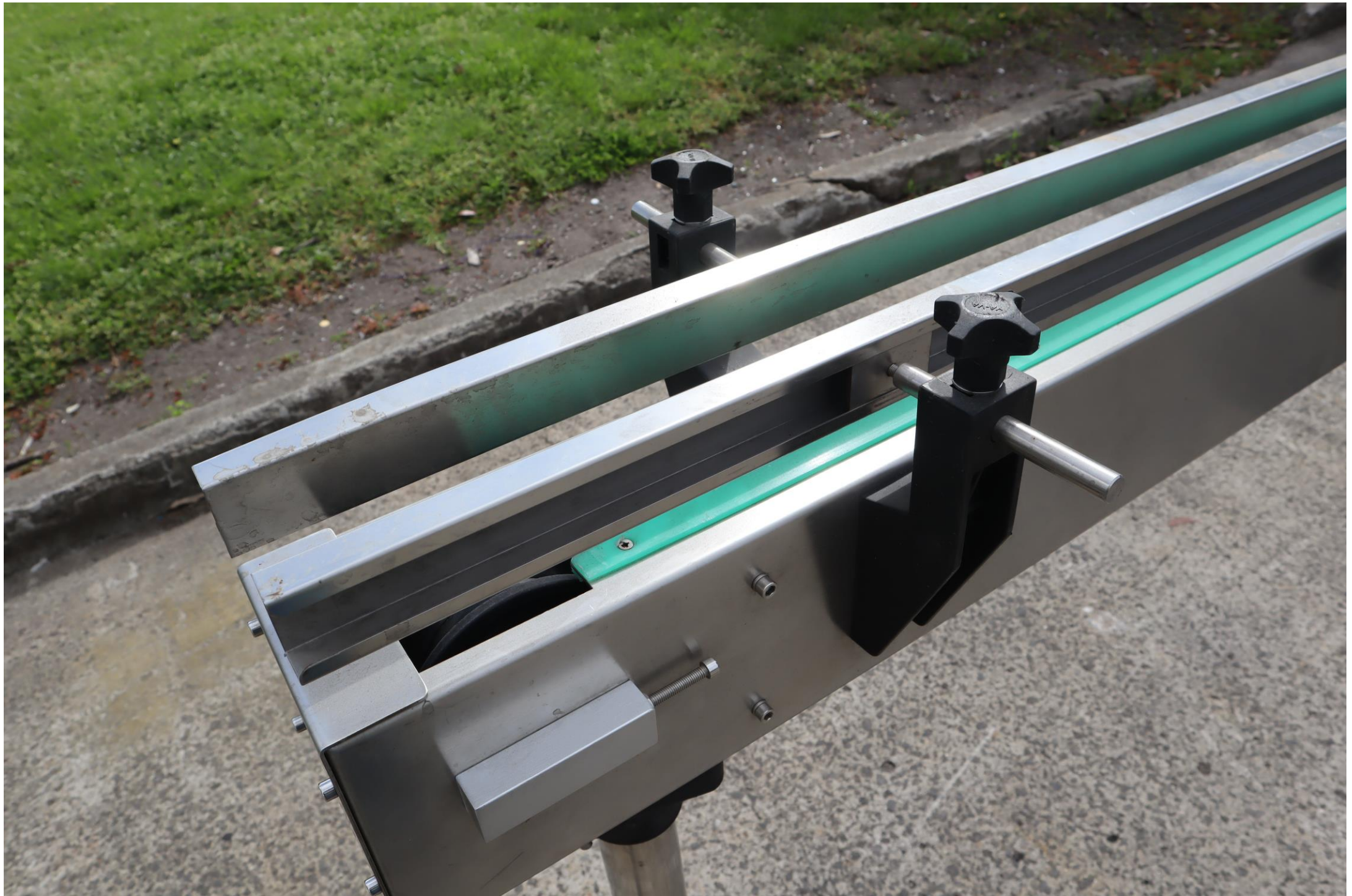


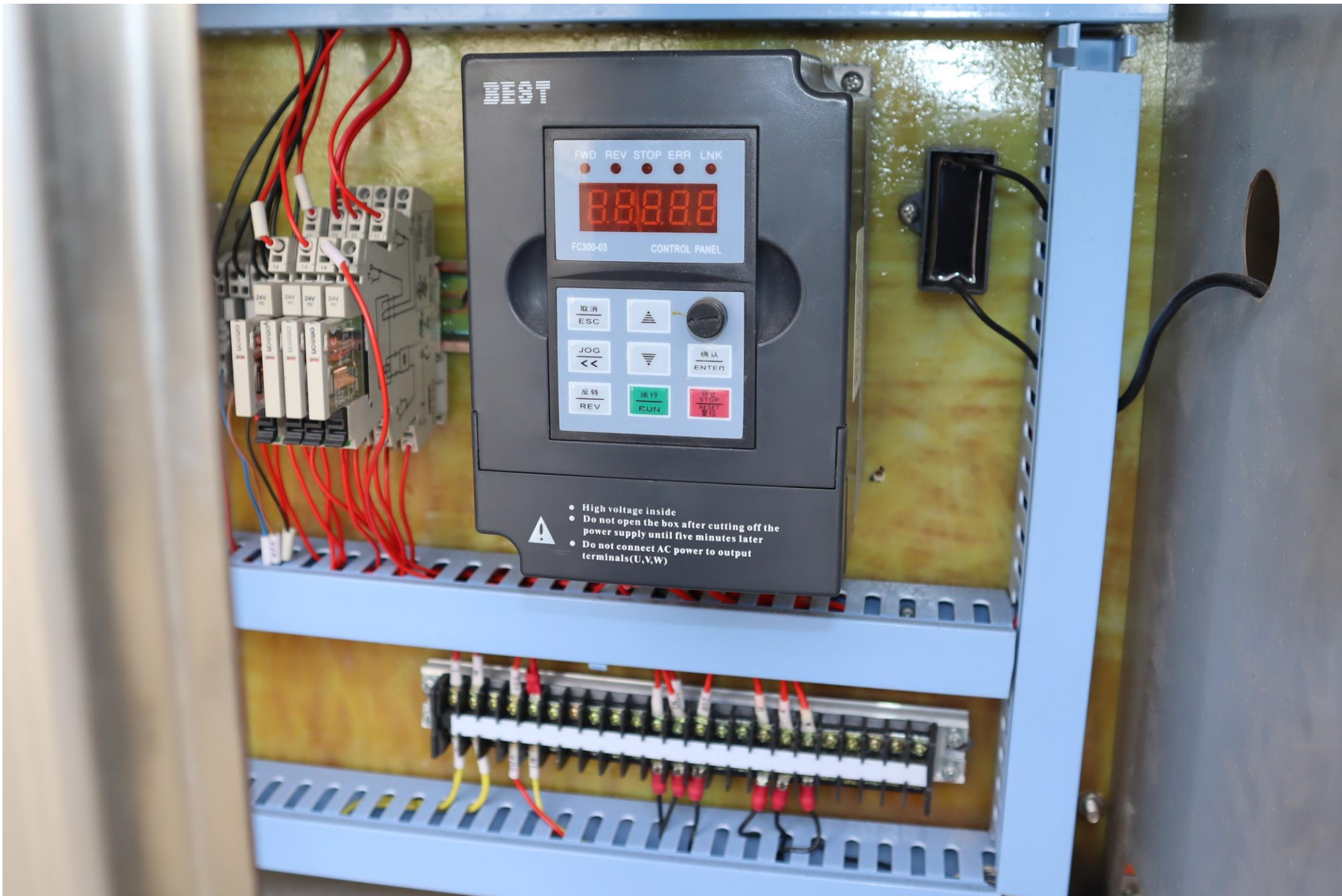












FWD REV STOP ERR LNK



88888

FC300-03 CONTROL PANEL

取消 ESC		
JOG ←←		确认 ENTER
反转 REV	运行 RUN	停止 STOP RESET 复位



- High voltage inside
- Do not open the box after cutting off the power supply until five minutes later
- Do not connect AC power to output terminals(U,V,W)











