









1 DIVISION = 2.5A



NORMAL LOAD = 50A

areta





Parker
AC10
Series




CAUTION
1. Do not touch the motor or contacts.
2. Perform parts replacement after discharge is finished.
3. Do not connect input terminals (+V) to the power supply.

A-5

Parker
AC10
Series



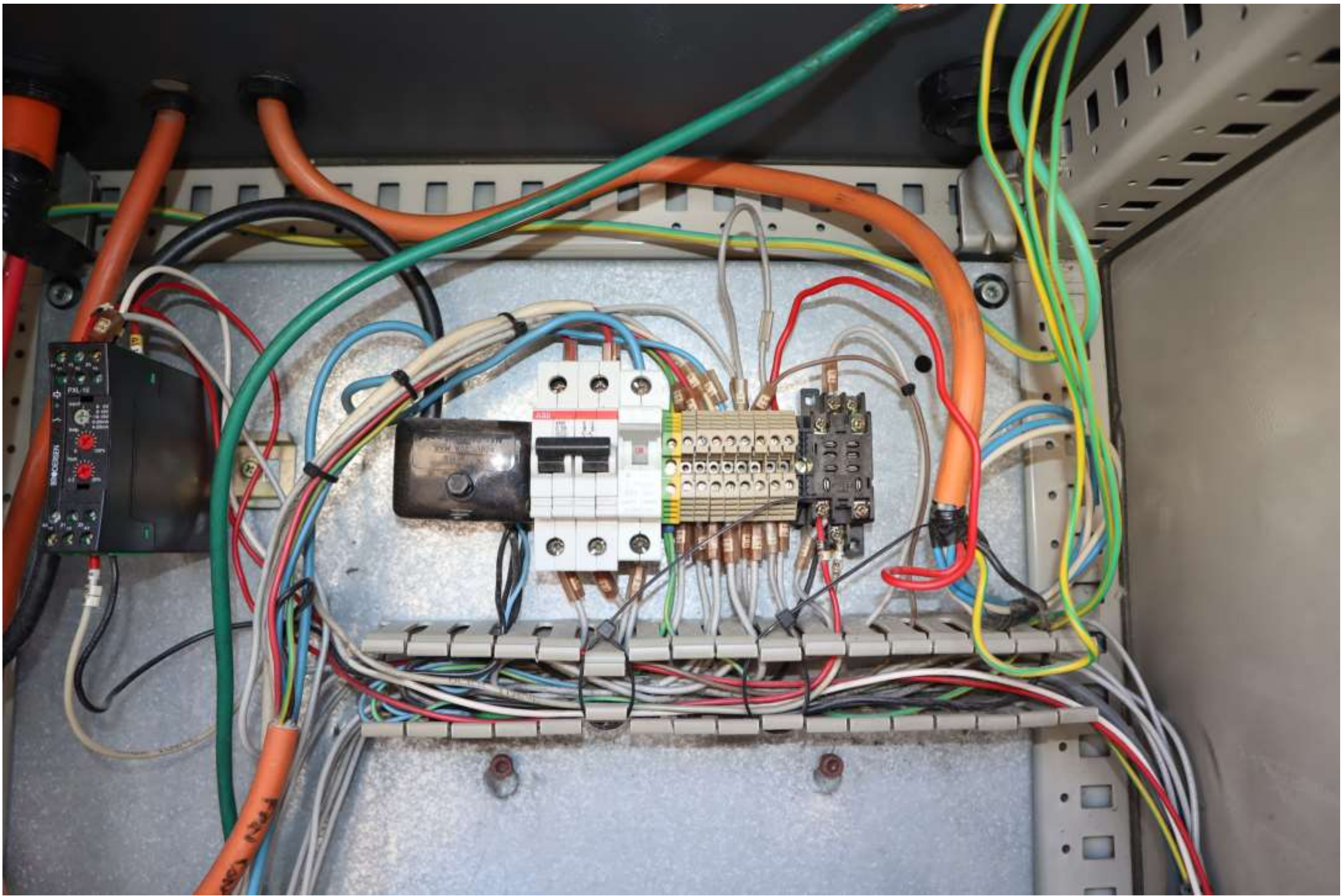
A digital display panel with a yellow keypad. The display shows '8888'. Below the display are four small indicators: 'MOTOR', 'FWD', 'REV', and 'FRG'. The keypad has six buttons: a green 'M' button, a yellow up arrow, a yellow down arrow, a red 'O' button, and two grey buttons with left and right arrows. The text 'Parker AC10 Series' is printed on the keypad area.

 CAUTION:


- 1) Do not re-set while the motor is rotating
- 2) Perform parts replacement after discharge is finished
- 3) Do not connect output terminals(U.V.W) to the power supply



Parker
AC10
Series





 CAUTION:

- 1) Do not re-set while the motor is rotating
- 2) Perform parts replacement after disconnecting power
- 3) Do not connect output terminals (U, V, W)

ATTENTION:

1. Ne pas remettre à zéro pendant que le moteur tourne
2. Effectuer le remplacement des pièces qu'après la décharge soit terminée.
3. Ne pas raccorder les bornes de sortie de l'alimentation.



www.parker.com

MODEL	10G - 47 - 0750 - BF
INPUT	3PH AC 380~480 V 80/64 A 50/60 Hz
OUTPUT	3PH AC 0~INPUT V 75 A 0~590Hz 37 kW

1. Maximum Surrounding Air Temperature 40°C.
2. Solid State motor overload protection reacts when reaches 150% of FLA.
3. Install device in pollution degree 2 environment.

Parker Hannifin Manufacturing Germany GmbH & Co KG
Robert-Bosch-Str. 22, 77656 Offenburg, Germany Tel.: +49 (0)781 509-0



10G4707502032000034
S/N NO. 3.32 BS NO 1.01

10G470750