



HANDLE WITH CARE
DO NOT REMOVE
OR DESTROY THIS LABEL



DANGER
ELECTRICAL EQUIPMENT
AUTHORIZED
PERSONNEL ONLY

WARNING

Item	Checked
1. All electrical work completed	<input checked="" type="checkbox"/>
2. All electrical work inspected	<input checked="" type="checkbox"/>
3. All electrical work approved	<input checked="" type="checkbox"/>
4. All electrical work signed off	<input checked="" type="checkbox"/>
5. All electrical work documented	<input checked="" type="checkbox"/>
6. All electrical work completed	<input checked="" type="checkbox"/>
7. All electrical work inspected	<input checked="" type="checkbox"/>
8. All electrical work approved	<input checked="" type="checkbox"/>
9. All electrical work signed off	<input checked="" type="checkbox"/>
10. All electrical work documented	<input checked="" type="checkbox"/>











A90 PLC- / position controller
 DPS- / Positioner-Controller
 A10 Servo vers. Front servo-control
 A11 Servo vers. Rear servo-control
 A12 Steuersch. Strö 24V-0

PE N L1 L2 L3
 LINE
 L1 L2 L3 N PE
 LINE
 I I I SCHÄFFNER
 FN 256 - 36 - 47
 PA
 LOAD
 L1 L2 L3 N PE
 LOAD
 PE N L1 L2 L3

KB1221
 KB1222

LB1221
 LB1222

HOCHSPANNUNG
 Achtung! Gefahr des elektrischen Schlags!
HIGH VOLTAGE!
 Danger! Risk of electric shock!
HOHE TEMPERATUR!
 Achtung! Gefahr des Verbrennens!
HIGH TEMPERATURE!
 Danger! Risk of burns!



60 • 50 • 40 • 30 • 20 • 10 • 0 °C

S01

[L1 L2]
48V 24V 250V 115V
60V N N L N N
N N

1 2 3 4 5 6 7

A beige rectangular thermostat unit with a black rotary dial on top. The dial has temperature markings from 0 to 60 degrees Celsius. Below the dial are seven terminal ports labeled 1 through 7. The unit is mounted on a metal surface and has a yellow label 'S01' on its right side.

S01

A white terminal block with a blue wire connected to it. A yellow label 'S01' is attached to the block.

S01 30°C
Thermostat
Schaltschrank
temperature control
switch cabinet

PLC- /
SPS- / P

K01222

Z0122

K01221

RECOMMENDED TORQUE 3.9 Nm

Z0107

PE	N	L3	L2	L1
LINE				
L1	L2	L3	N	PE

SCHAFFNER
MADE IN HUNGARY
FN 256 - 36 - 47
3x480/275VAC 50/60Hz
36A@50°C 25/100/21

RECOMMENDED TORQUE 1.9 - 2.2 Nm

LOAD	L1'	L2'	L3'	N'	PE
------	-----	-----	-----	----	----

05 10

Terminal block with four screws and a blue wire connected to the leftmost screw.

Terminal blocks with multiple screws and wires connected. Labels K01221 and K01222 are visible on the right side.

A1	A2	1	L1	3	L2	5	L3	2	1
----	----	---	----	---	----	---	----	---	---

Warning!
No live
subsystem
switching
allowed!

Warning!
No present
switch
allowed!



N13
N14
N26

Projekt Chassis Test
 AB Nr. 202247 Typ 1412
 Aufbau S. Spindel RSB3
 Verdrahtung S. Spindel
 Verzählung

N13
Papierspender
Paper dispenser

K13

N15
Klebebandspender
Tape dispenser

K14

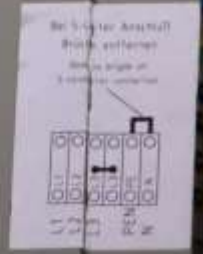
N36
Separierband
Separating conveyor

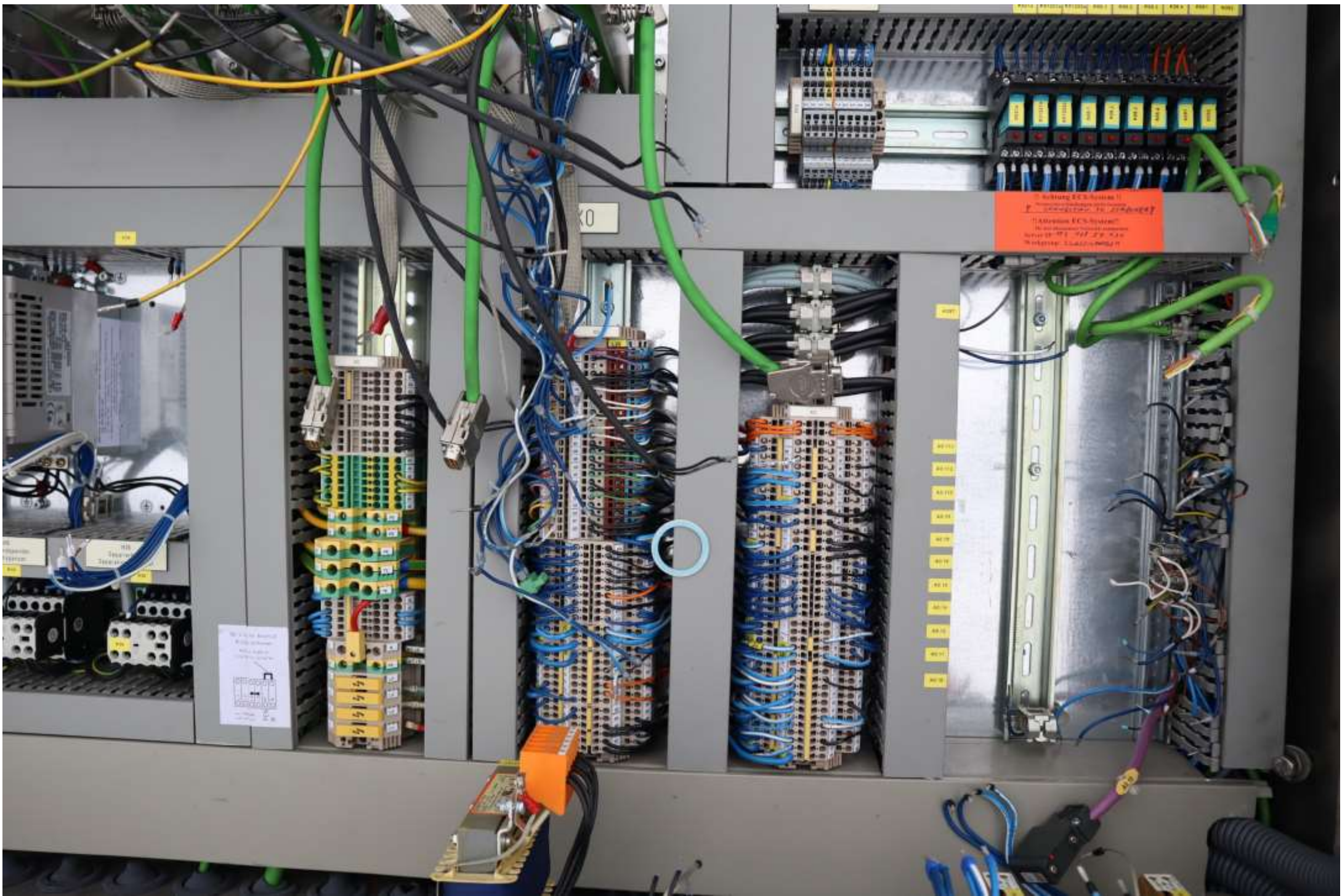
K36

K13

K14

K36





1. Adaption ECS-System
2. Adaption ECS-System
3. Adaption ECS-System
4. Adaption ECS-System
5. Adaption ECS-System
6. Adaption ECS-System
7. Adaption ECS-System
8. Adaption ECS-System
9. Adaption ECS-System
10. Adaption ECS-System

10
11
12
13
14
15
16
17
18
19
20
21
22
23
24
25
26
27
28
29
30
31
32
33
34
35
36
37
38
39
40
41
42
43
44
45
46
47
48
49
50
51
52
53
54
55
56
57
58
59
60
61
62
63
64
65
66
67
68
69
70
71
72
73
74
75
76
77
78
79
80
81
82
83
84
85
86
87
88
89
90
91
92
93
94
95
96
97
98
99
100

10
11
12
13
14
15
16
17
18
19
20
21
22
23
24
25
26
27
28
29
30
31
32
33
34
35
36
37
38
39
40
41
42
43
44
45
46
47
48
49
50
51
52
53
54
55
56
57
58
59
60
61
62
63
64
65
66
67
68
69
70
71
72
73
74
75
76
77
78
79
80
81
82
83
84
85
86
87
88
89
90
91
92
93
94
95
96
97
98
99
100

M011

M011



® Filterluefter Fan-and-Filter Uhit
Ventilateur à filtre Ventilator
Filterfläkt Ventilatore-filtro
Ventilador con filtro

SK 3326100

CE

230V- 50/60 Hz; 0,29/0,35A; 64/80W

Fabr.-Nr. 321772

RITTAL GmbH & Co. KG
Auf dem Stuetzelberg
D-35745 Herborn

CSA[®] US
Type 12

Maschinentyp

machine type

CM/HA

Auftrags-Nr. / Baujahr

order number / build

352141

/ 2005

Maschinennummer

machine number

2/352141/05

Nennspannung

rated voltage

400/230+N+PE

Frequenz

frequency

60

Hz

Steuerspannung

control voltage

24 DC

V

Nennstrom

rated current

14

A

Vorsicherung

fuse

25

A

Nennleistung

rated power

4,5

kW



