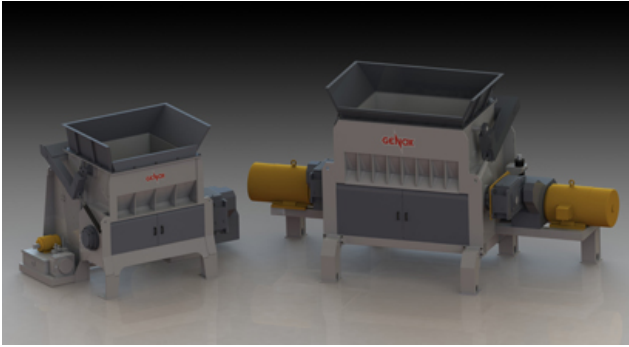


King Kong Series Single Shaft Shredders



KING KONG Series Single Shaft Shredders are heavy duty size reduction machines suitable for processing a wide range of materials. These shredders are ideal for the size reduction of flexible and/or medium hardness hollow products in bales. The fast acting, PLC controlled swing pusher automatically forces material to the rotor according to motor loading which maximizes material throughput. Machine capacities typically range between 1,500kg/hr – 9,000kg/hr+ depending on the model, material type and application as below:

- Plastics – Mouldings, Purgings/Lump, Profiles, Films etc.
- Paper & Cardboard – Confidential Documents, Production Waste, Packaging Materials etc.
- Copper Cable – Household, Telecoms and Industrial Cables including S.W.A
- Aluminum – Used Beverage Cans (UBC's), Swarf, Cables etc.
- Textiles – Carpet (Rolls & Tiles), Garments etc.
- Security Destruction – Counterfeit Items, Faulty Goods, Out of Date Stock etc.
- Foam – Production Waste etc.
- Mixed Household & Commercial Waste – RDF/SRF Production

A Selection of Videos showing the shredders processing the above application:

- K1500 / PE Film [Watch Video](#)
- K1500/ PP woven bags [Watch Video](#)

Standard Features

- Energy Efficient + Maximum Cutting Force & Productivity
- Shock Absorbing Gearbox reduces Stress on Drive Components
- Rotor Knives can be rotated and used on several edges before replacement.
- Long Life Counter Knives can be used on two edges and adjusted to maintain cutter clearance
- Quick Change Screens for accurate particle size control
- Swing Ram Pusher with exchangeable PU Slides
- Rotor Quick Access Door on the back side
- Twin Speed Hydraulics with integrated air cooler
- Stand Alone Electrical Control Panel with Siemens PLC Control System
- Tested, Approved and Certified to the applicable CE safety standards

For technical data or more information please download King Kong Series Brochure

 Download



A brochure will be added soon

 Picture Gallery
(Click to enlarge)

