









MAIN SWITCH
BUNDLEWRAPPER LINE 2

WARNING - RESTRICTED ENTRY
ELECTRICAL LICENCE REQUIRED



 LOCK OUT
HERE





1000 1000000
1000 1000000
1000 1000000

1000 1000000
1000 1000000
1000 1000000



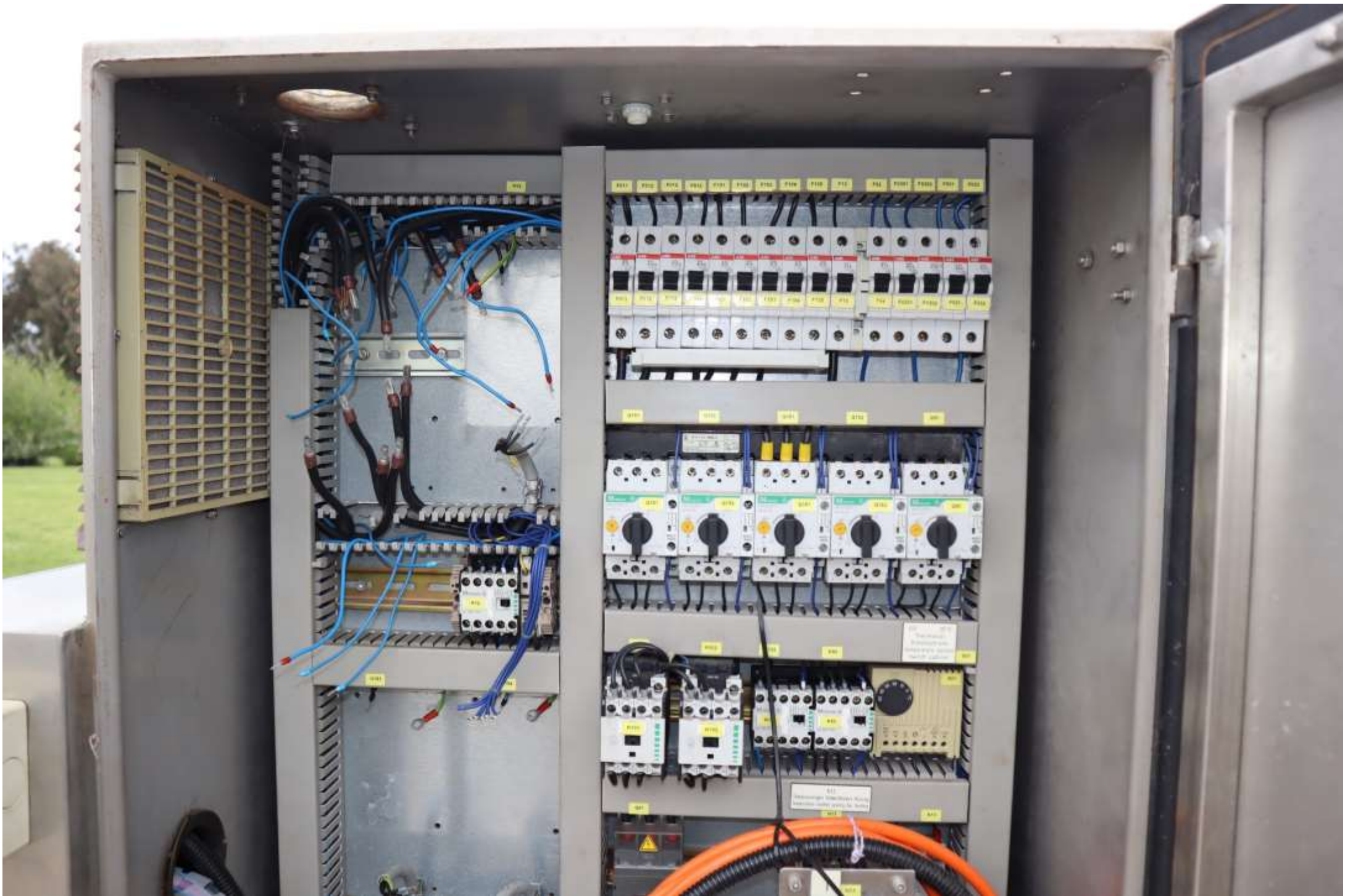
MAIN SWITCH
ELECTRICAL ROOM

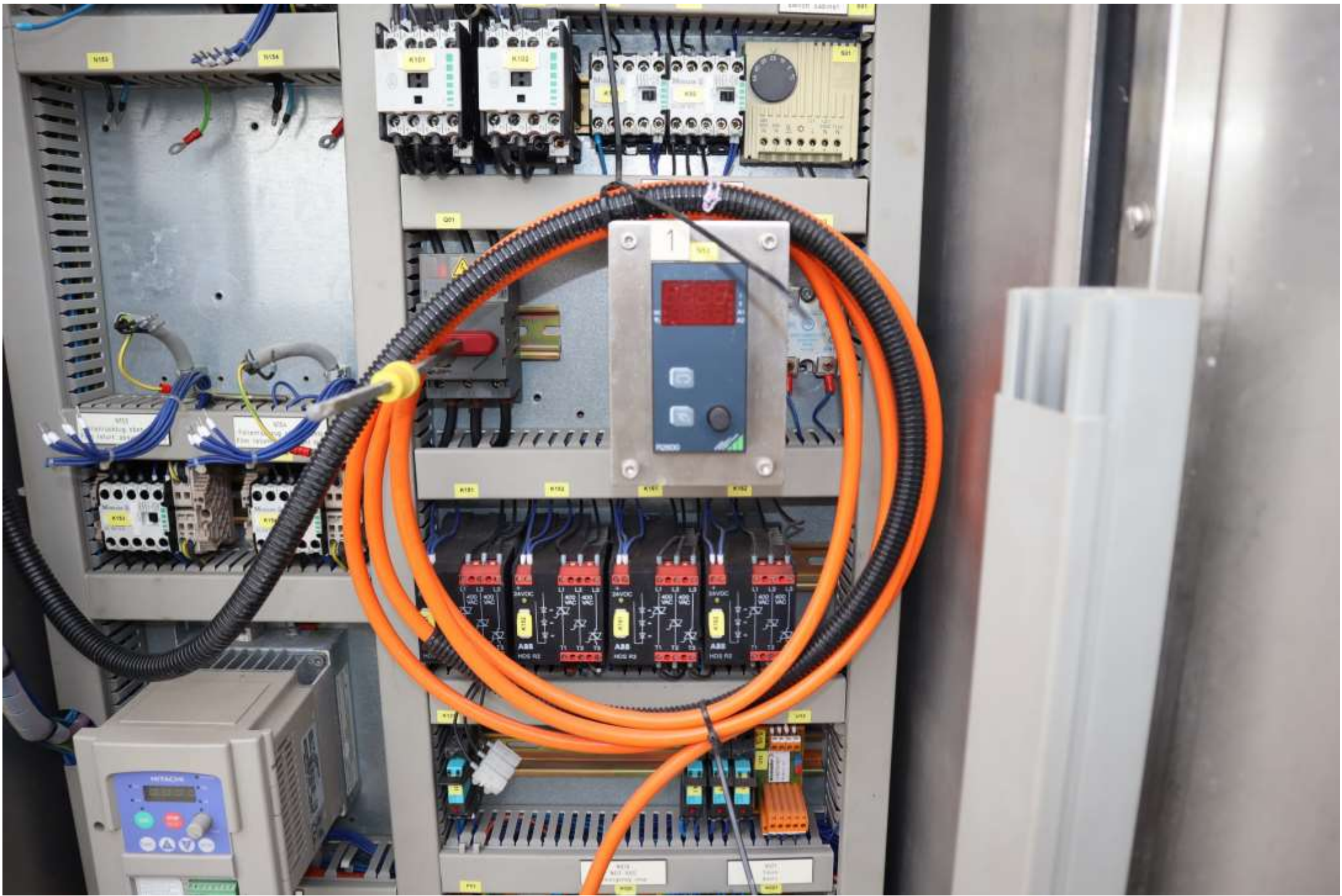
WARNING: HIGH VOLTAGE
ELECTRICAL ROOM

LOCK OUT
HERE











K101

K102

K00

Q01

1

N13

R2800

24VDC

400 VAC

400 VAC

400 VAC

400 VAC

400 VAC

400 VAC

400 VAC

400 VAC

400 VAC

400 VAC

400 VAC

400 VAC

400 VAC

400 VAC

400 VAC

N153
Folienrückzug oben links
Film return above left side

K153

N154
Folienrückzug oben rechts
Film return above right side

K154



N35

K131



N35

HITACHI

88.88

RUN

STOP
RESET

FUNC

1

2

STR

STOP
Overvoltage
Undervoltage
Ground fault
Thermal TRIP

N35
Einlaufband
infeed conveyor

K35

K131

K151

K152

P00

K020
K01-AL
emergency

K020



N35

ABB
DS R2

K152

ABB
R2

K131

131

P03

HITACHI
Model : SJ100 -007NFE
HP/kW : 1 / 0.75
Input/Entrée: 50,60Hz 200-240 V 1Ph 9.0A
50,60Hz 200-240 V 3Ph 5.2A
Output/Sortie: 1-360Hz 200-240 V 3Ph 4.0A
MFG No. 09W T12367 00094 Date: 0009
Hitachi, Ltd. MADE IN JAPAN NE16795-34 S

E178241
UL UL
LISTED
IND CONT EQ 31UA
CEC N155



K020
NDT-AUS
emergency stop

K021
Türen
doors

P03

K070

Y881
RELAY

K020
POWER
CH.1
CH.2
13 23 33 41
14 24 34 42
[P1]
[N1] 511 512 521 522
[P1]

K021
POWER
CH.1
CH.2
13 23 33 41
14 24 34 42
[P1]
[N1] 511 512 521 522
[P1]

A00

A0

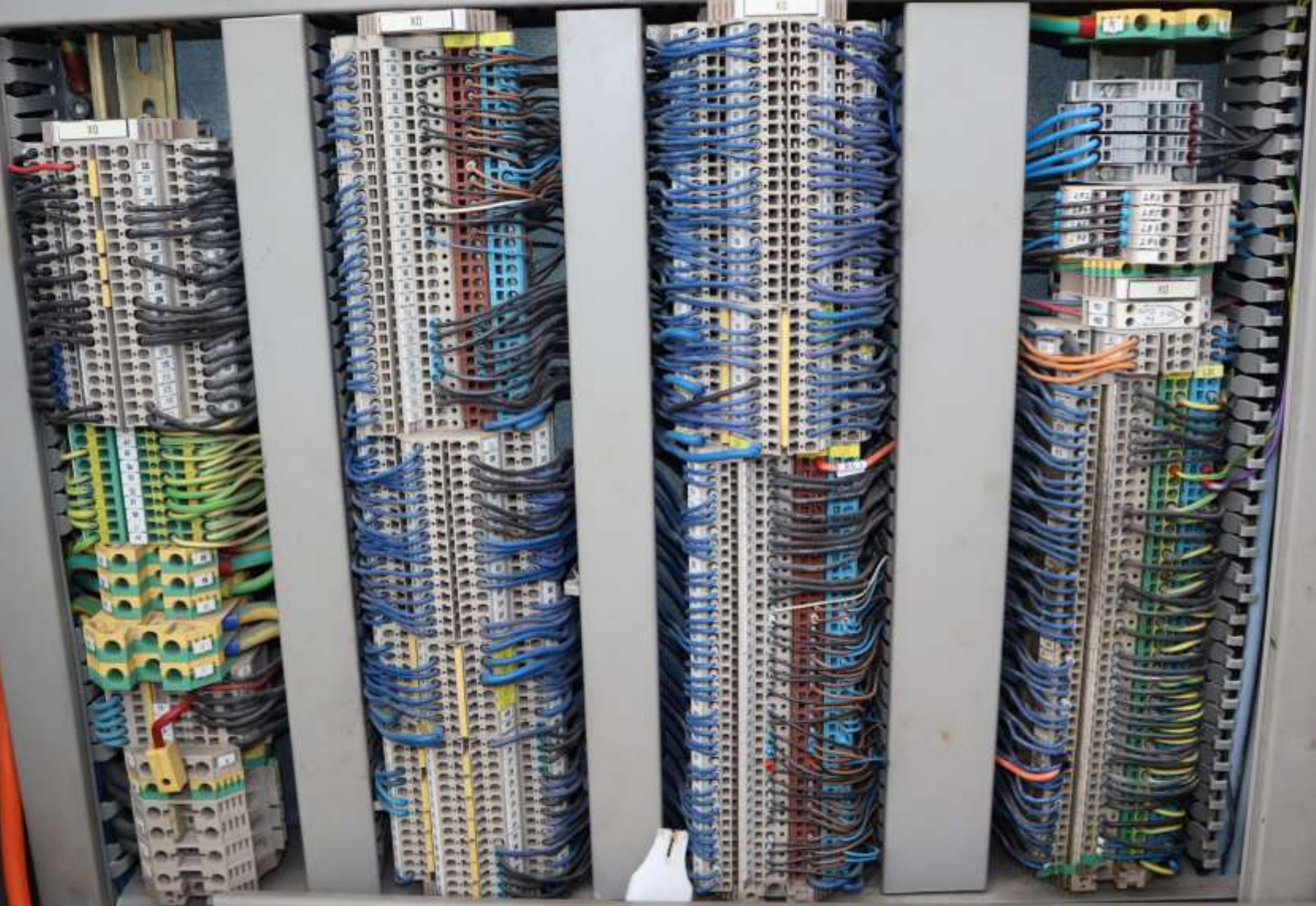
A1

A2

A3

A4

X0





36 2041 T10
943
CE

36 2041 T10
943
CE