









TECHTOP MOTOR CE

TYPE: TA566-4	Day: 5/1	IP55	2018	ECB:3084-1
SN No: 18101005	INS. C.I.F	10 B	KG	
V	Hz	KW	A	2857 (rpm)
15	50	0.09	0.43	0.57 (100%)
400 Δ Y	50	0.09	0.72 (3.4)	0.91 (100%)
400 Δ Y	50	0.09	0.72 (3.4)	0.91 (100%)

Supplied by: **TECHTOP AUSTRALIA PTY LTD**
www.techttop.com.au Telephone: 1900 TECHTOP

TECHTOP[®] MOTOR CE

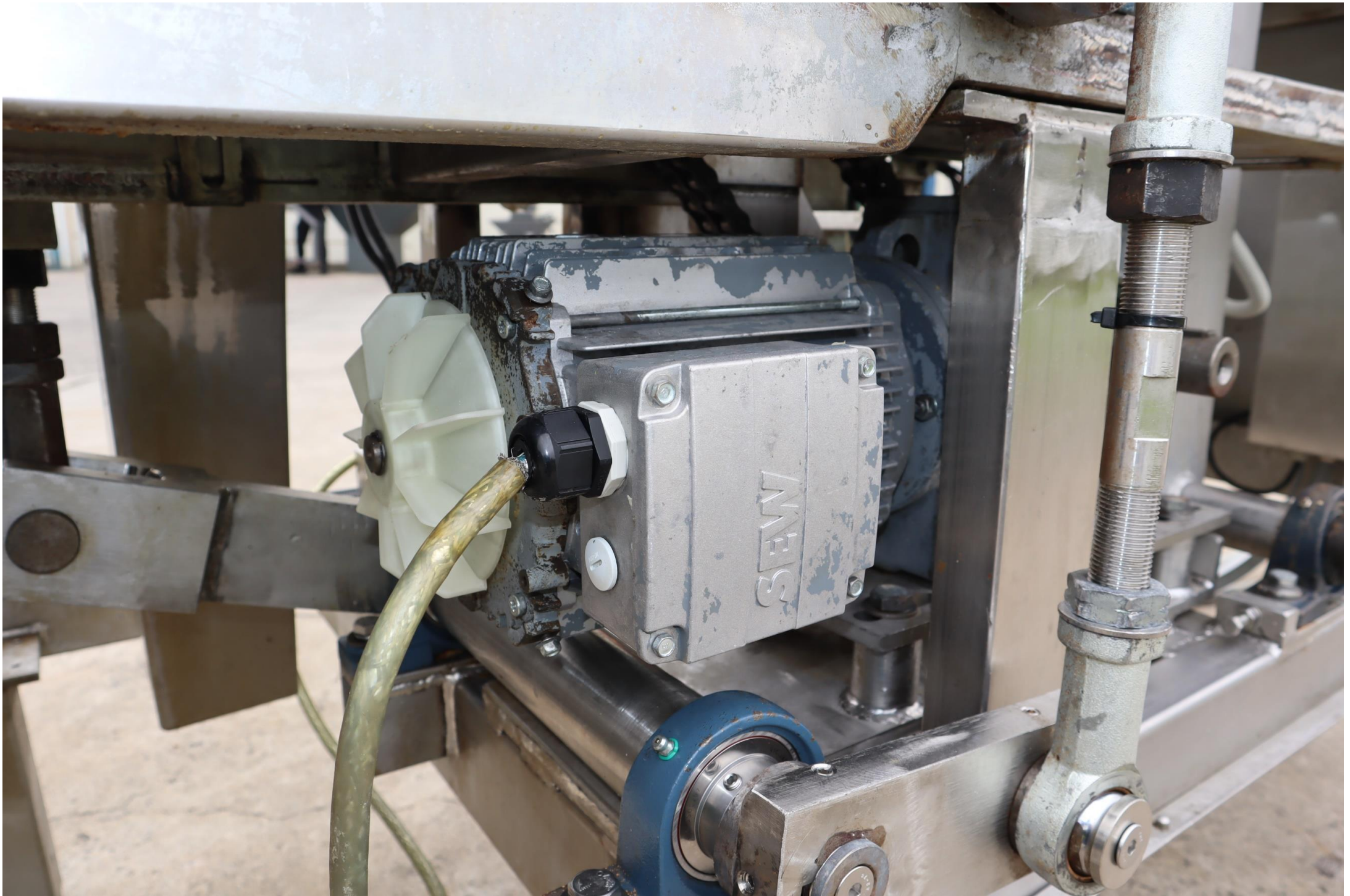
TYPE: TAI 56B-4 Duty: S1 IP55 2018 IEC60304-1

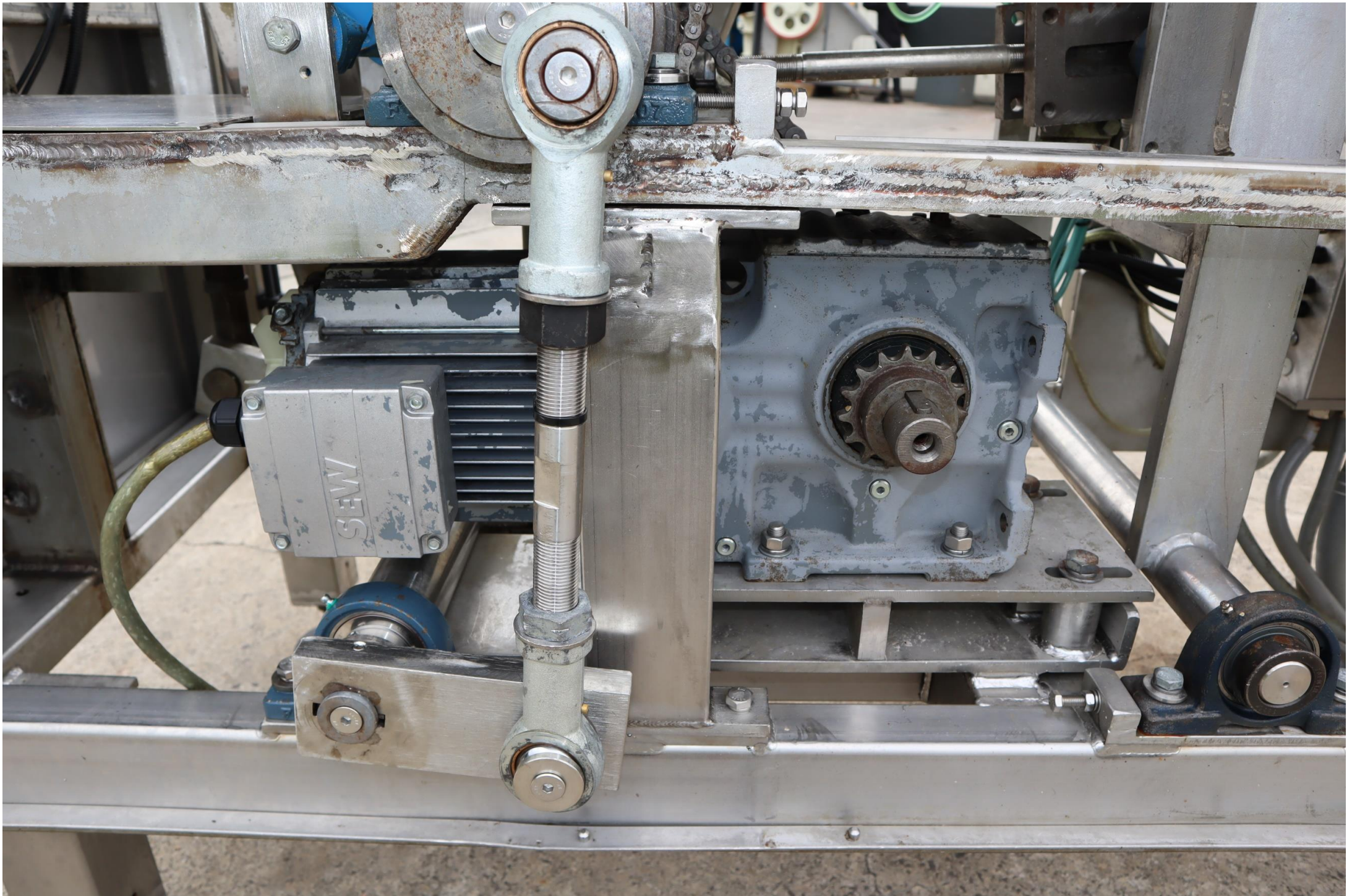
SN No. 1810-005 Ins. Cl. F IM B KG.

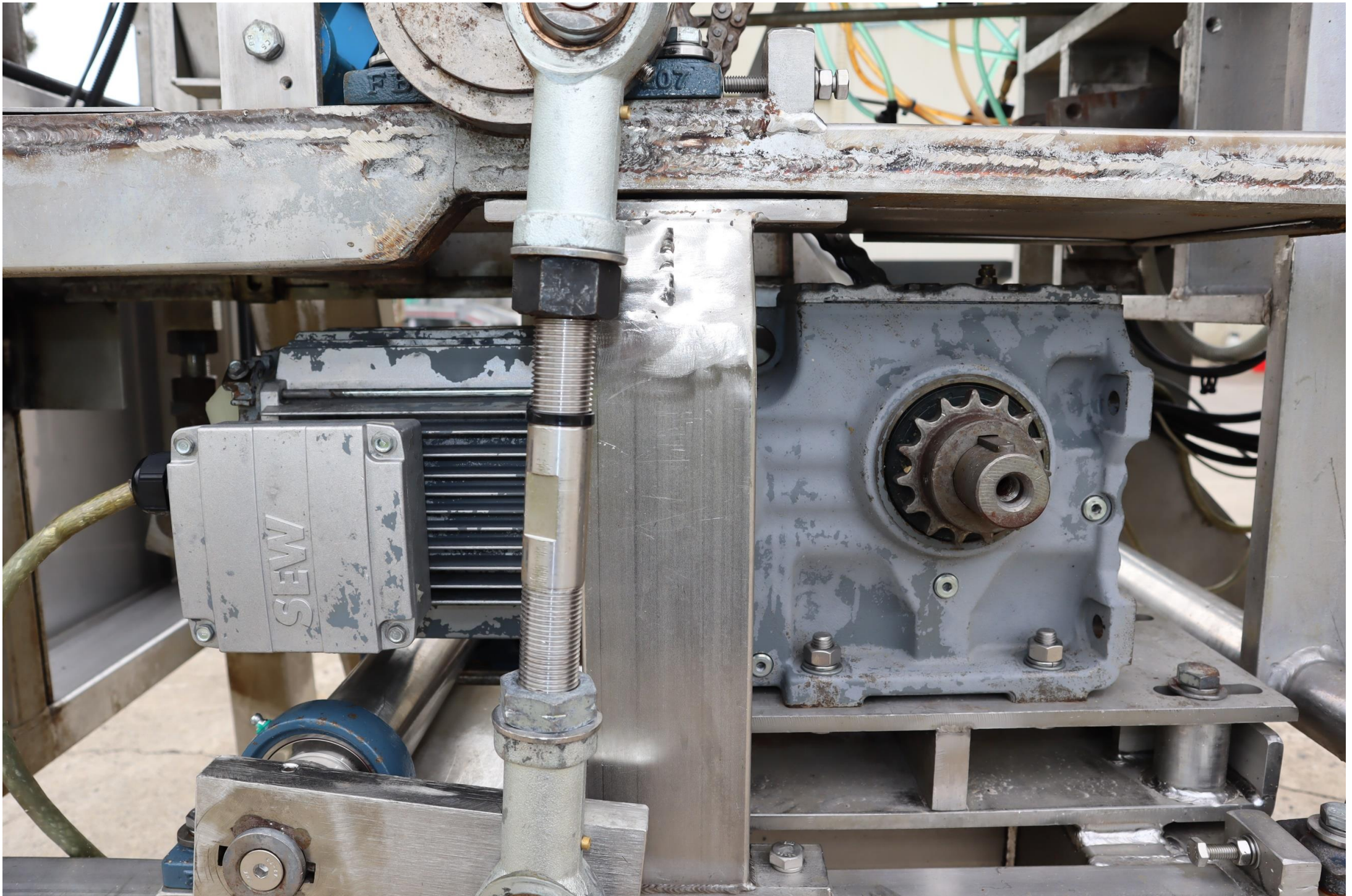
V	Hz	kW	A	cos ϕ	r/min
15 Y	50	0.09	0.43	0.57	1390
230/400 Δ /Y	50	0.09	0.72/0.41	0.60	1375
400/480 Y	60	0.10/0.11	0.41	0.57	1680

Ex. DE: 6201 ZZ C3 Brg. NDE: 6201 ZZ C3 Eff. 52.6 %

Supplied by **TECHTOP AUSTRALIA PTY LTD**
www.techtop.com.au Telephone: 1300 TECHTOP











Type 1,12,4X
ENCLOSURE



Industrial Control Equipment Enclosure

Type 1,12,4X

INDUSTRIAL CONTROL PANEL ENCLOSURE

ISSUE No. A-2979

Standardschaltschrank
Standard enclosure
Armoire distribution
Standard apparatskåp
Armadio Standard
Standaardkast
標準エンクロージャー



Ser. No. 021064

AE 1004 600



RITTAL GmbH & Co. KG D-35745 Herborn
ISO 9001/14001 certified RoHS compliant







