



















WHEN INSTALLING COVER, ENSURE  
BOTH OPERATING LEVER AND  
INTERNAL SWITCH TOGGLE ARE  
ALIGNED IN 'OFF' POSITION TO GIVE  
CORRECT 'ON' - 'OFF' INDICATION

OFF

ON

10A



LBL-LGLG



**AEROVENT**  

---

**A U S T R A L I A**

[www.aerovent.com.au](http://www.aerovent.com.au)













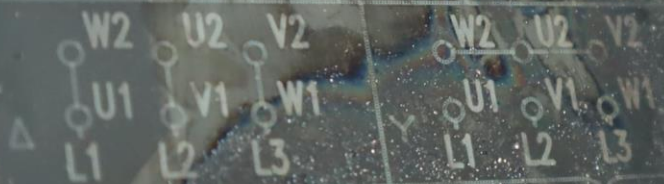




EFF E2 CE  
IEC 60034 VDE 0530

3 ~ AL90S/L 2013/01 1012251075  
IP55 In d F 1.80 K S1 SF1.00 AMB40°C

V	Hz	kW	min <sup>-1</sup>	A	cos φ
220 Δ	50	1.1	910	5.08	0.74
380 Y			910	2.94	0.74
230 Δ	50	1.1	920	4.87	0.71
400 Y			920	2.80	0.71
415 Y	50	1.1	930	2.86	0.67
440 Y	60	1.3	1100	3.05	0.74
460 Y			1110	3.05	0.70



6205-ZZ MOBIL POLYREX-EM 21  
6204-ZZ

1301 1012251075  
100-410V 10-100V





**AEROVENT**  
A U S T R A L I A

Head Office Tel: +61 3 9720 8088  
Email: fans@aerovent.com.au

**aerovent.com.au**

**SERIES: SAPPHIRE**

Model No:

SA063-603-445A'L

Serial No:

12200

Date of manufacture:

MAR 2013

Location No:

RPM	kW	FLA	Volts	Hz
930	1.1	3.05	415	50

**SAFETY WARNING!**





MULTI-WING

4ZR

206508 / A

Pitch ref

MULTI-WING

Pitch ref































